

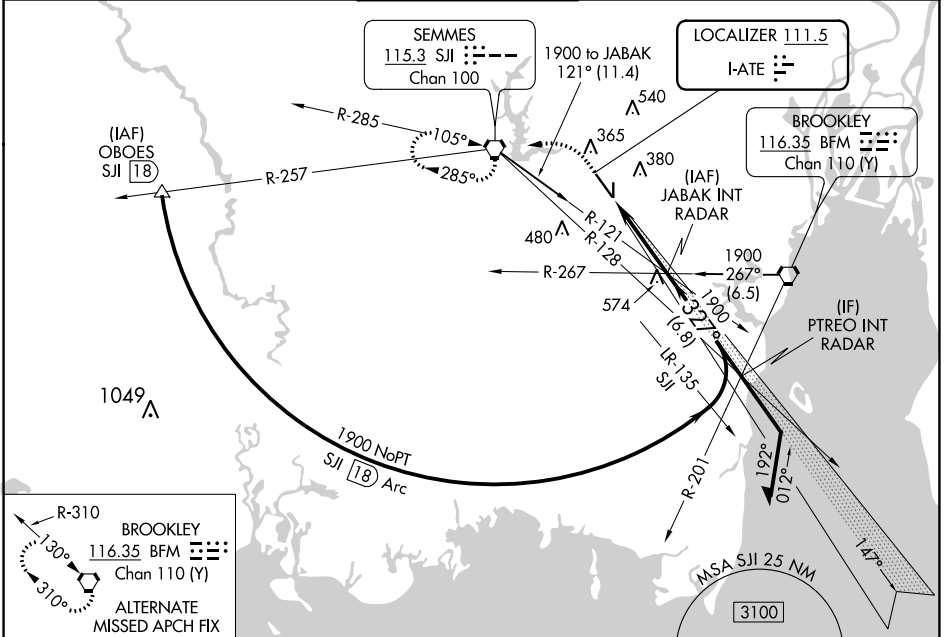
LOC I-ATE <b>111.5</b>	APP CRS <b>327°</b>	Rwy Idg <b>8502</b> TDZE <b>219</b> Apt Elev <b>219</b>
---------------------------	------------------------	---

# ILS or LOC RWY 33

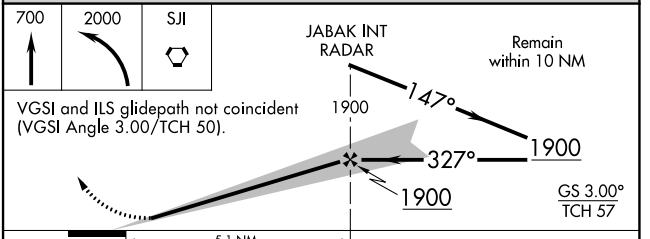
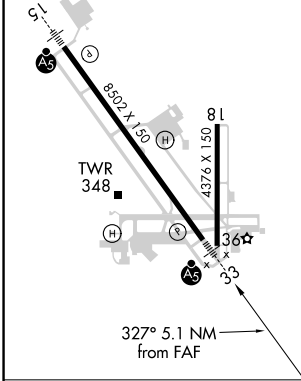
MOBILE RGNL (MOB)

* RVR 1800 authorized with use of FD or AP or HUD to DA. 	MISSED APPROACH: Climb to 700 then climbing left turn to 2000 direct SJI VORTAC and hold.
--	---

ATIS <b>124.75 257.85</b>	MOBILE APP CON * <b>118.5 269.3</b>	MOBILE TOWER * <b>118.3 (CTAF) 239.0</b>	GND CON <b>121.9 348.6</b>	CLNC DEL <b>119.85</b>	UNICOM <b>122.95</b>
------------------------------	--	---	-------------------------------	---------------------------	-------------------------



ELEV 219	TDZE 219
MIRL Rwy 18-36 HIRL Rwy 15-33	



FAF to MAP 5.1 NM					
Knots	60	90	120	150	180
Min:Sec	5:06	3:24	2:33	2:02	1:42

CATEGORY	A	B	C	D
S-ILS 33*	419/24 200 (200-½)			
S-LOC 33	660/24	441 (500-½)	660/45	441 (500-¾)
<input checked="" type="checkbox"/> CIRCLING	680-1	461 (500-1)	740-1½ 521 (600-1½)	780-2 561 (600-2)

SE-4, 30 NOV 2023 to 28 DEC 2023

SE-4, 30 NOV 2023 to 28 DEC 2023