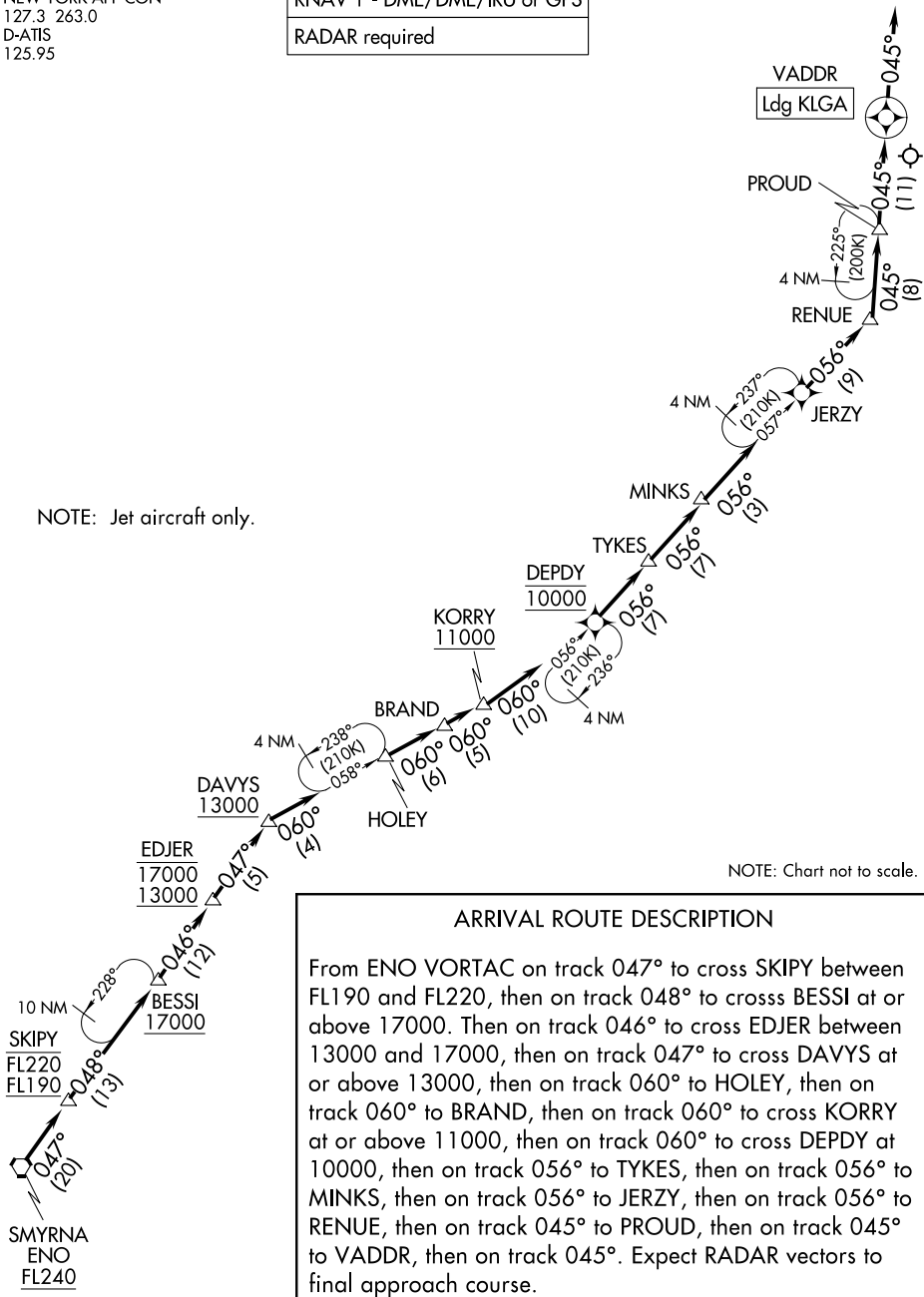


PROUD ONE ARRIVAL (RNAV) Arrival Route

NEW YORK APP CON  
127.3 263.0  
D-ATIS  
125.95

RNAV 1 - DME/DME/IRU or GPS  
RADAR required



NOTE: Jet aircraft only.

ARRIVAL ROUTE DESCRIPTION

From ENO VORTAC on track 047° to cross SKIPPY between FL190 and FL220, then on track 048° to cross BESSI at or above 17000. Then on track 046° to cross EDJER between 13000 and 17000, then on track 047° to cross DAVYS at or above 13000, then on track 060° to HOLEY, then on track 060° to BRAND, then on track 060° to cross KORRY at or above 11000, then on track 060° to cross DEPDI at 10000, then on track 056° to TYKES, then on track 056° to MINKS, then on track 056° to JERZY, then on track 056° to RENUE, then on track 045° to PROUD, then on track 045° to VADDR, then on track 045°. Expect RADAR vectors to final approach course.