

ILS or LOC RWY 6

COEUR D'ALENE/PAPPY BOYINGTON FLD (COE)

LOC I-COE 110.7	APP CRS 051°	Rwy Idg 7400
		TDZE 2291
		Apt Elev 2320

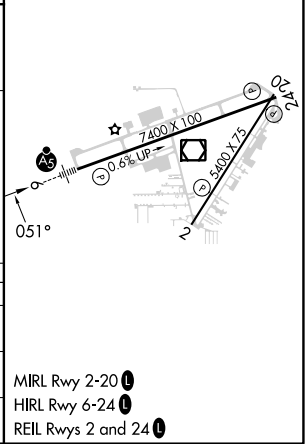
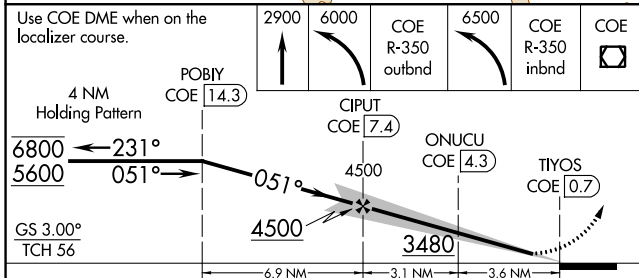
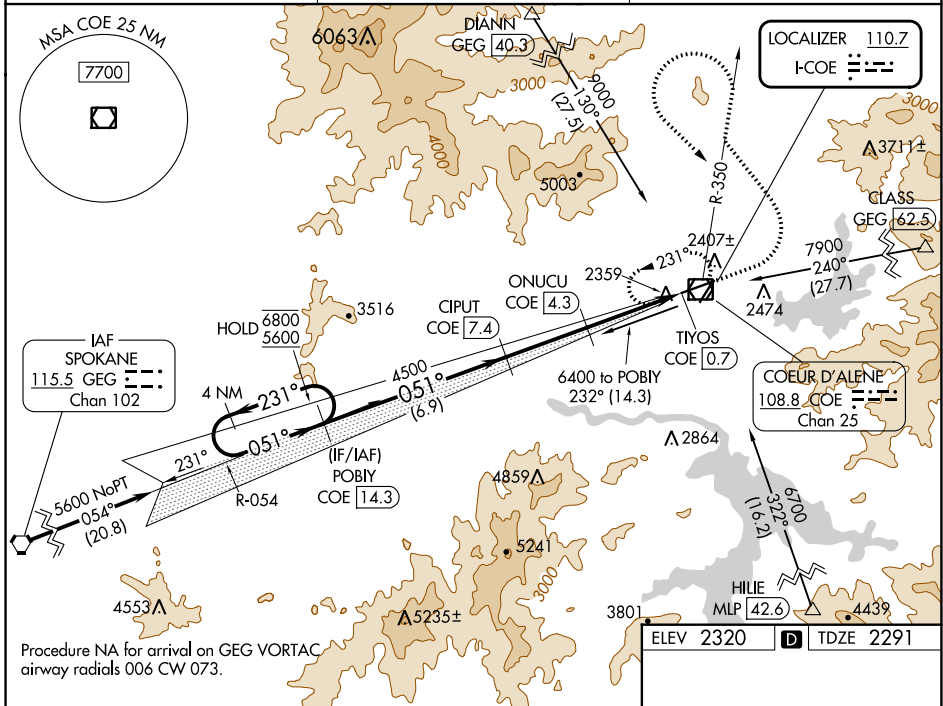
DME required.

⚠ Circling Rwy 2 NA at night. Autopilot coupled approach NA below 2840. Simultaneous reception of I-COE localizer and COE DME required. Circling NA for Cat D southeast of Rwy 6-24.

MALSR

MISSED APPROACH: Climb to 2900 then climbing left turn to 6000 on COE R-350 outbound then climbing left turn to 6500 on COE R-350 inbound to COE VOR/DME and hold.

AWOS-3PT 135.075	SPOKANE APP CON 132.1 263.0	UNICOM 122.8 (CTAF)
----------------------------	---------------------------------------	-------------------------------



CATEGORY	A	B	C	D
S-ILS 6	2491-1/2 200 (200-1/2)			
S-LOC 6	2860-1/2	569 (600-1/2)	2860-1 569 (600-1)	2860-1 1/4 569 (600-1 1/4)
CIRCLING	2860-1 540 (600-1)	2880-1 560 (600-1)	3020-2 700 (700-2)	3180-2 3/4 860 (900-2 3/4)

ILS or LOC RWY 6

NW-1, 30 NOV 2023 to 28 DEC 2023

NW-1, 30 NOV 2023 to 28 DEC 2023