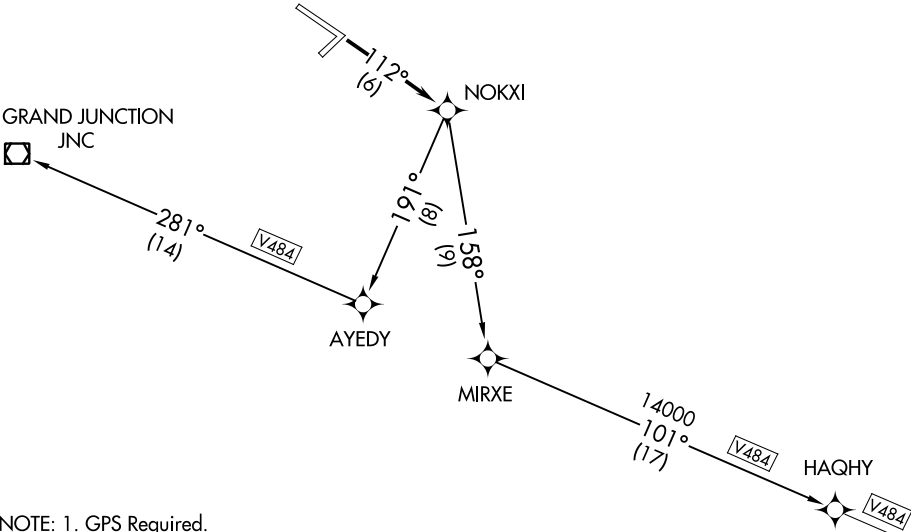


GRAND JUNCTION TOWER★
118.1 257.8
DENVER DEP CON★
119.7 317.4



NOTE: 1. GPS Required.
2. RNAV 1

TAKEOFF MINIMUMS:
Rwy 4, 22, 29: NA.
Rwy 11: GRAND JUNCTION TRANSITION: 2300-3 or standard with a minimum climb of 250' per NM from takeoff to 8000'. HAQHY TRANSITION: 5500-3 or standard with a minimum climb of 280' per NM from take-off to 11,000.

GRAND JUNCTION TRANSITION: Do not exceed 200K until AYEDY WP, cross JNC VOR/DME at MEA/MCA for direction of flight.

NOTE: Chart not to scale

▼

DEPARTURE ROUTE DESCRIPTION

TAKEOFF RUNWAY 11: Climb via 112° course to NOKXI WP.

GRAND JUNCTION TRANSITION (NOKXI1.JNC)

HAQHY TRANSITION (NOKXI1.HAQHY)