

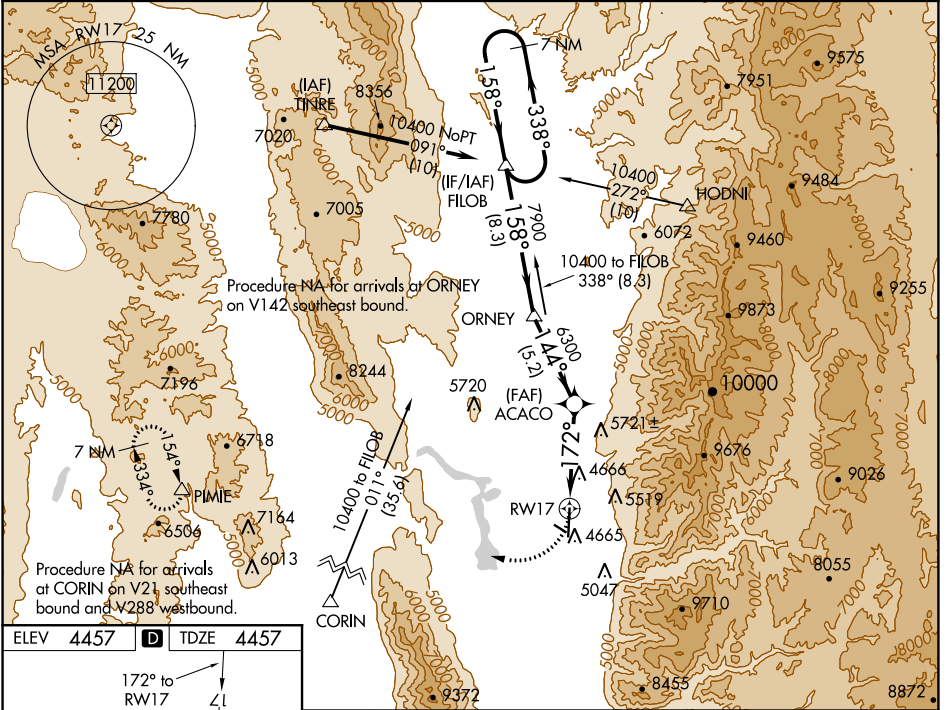
APP CRS	Rwy Idg	<b>9020</b>
<b>172°</b>	TDZE	<b>4457</b>
	Apt Elev	<b>4457</b>

# RNAV (GPS) RWY 17

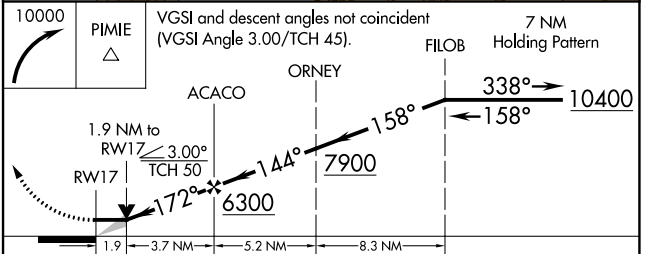
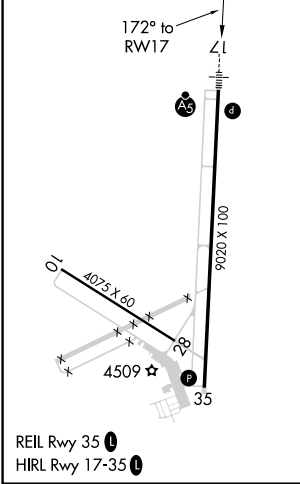
LOGAN-CACHE (LGU)

Night Landing: Rwy 10-28 NA. Inop table does not apply to LNAV Cats C/D. *Missed approach requires minimum climb of 310 feet per NM to 7700.	MALSR 	<b>MISSED APPROACH:</b> Climbing right turn to 10000 direct PIMIE and hold, continue climb-in-hold to 10000.
	DME/DME RNP-0.3 NA. Circling NA east of Rwy 17-35.	

ASOS <b>135.275</b>	SALT LAKE CENTER <b>127.7 354.125</b>	UNICOM <b>122.8 (CTAF)</b>
------------------------	--	-------------------------------



ELEV	<b>4457</b>	<b>D</b>	TDZE	<b>4457</b>
------	-------------	----------	------	-------------



CATEGORY	A	B	C	D
*LNAV MDA	5100-½	643 (700-½)	5100-1⅓	643 (700-1⅓)
LNAV MDA	5800-¾ 1343 (1400-¾)	5800-1 1343 (1400-1)	5800-3 1343 (1400-3)	1343 (1400-3)
<b>C</b> CIRCLING	5800-1¼ 1343 (1400-1¼)	5800-1½ 1343 (1400-1½)	5800-3	1343 (1400-3)

SW-4, 30 NOV 2023 to 28 DEC 2023

SW-4, 30 NOV 2023 to 28 DEC 2023