


VORTAC ELW 108.6 Chan 23	APP CRS 039°	Rwy Idg 6002 TDZE 758 Apt Elev 782
---------------------------------------	------------------------	---

VOR RWY 5

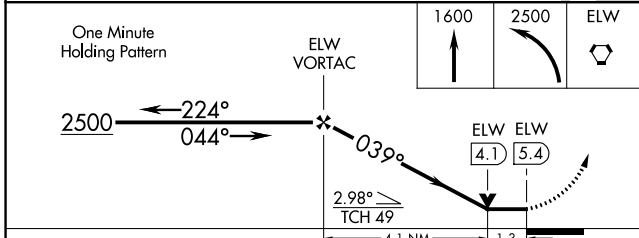
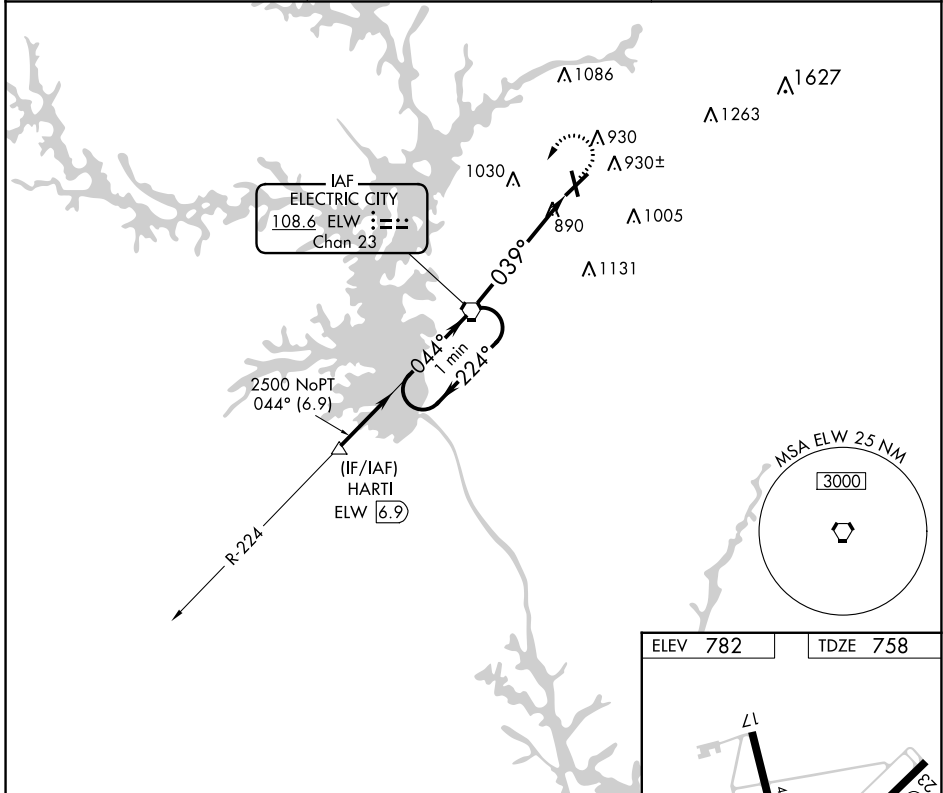
ANDERSON RGNL (A.ND)

⚠ If local altimeter setting not received, use Clemson altimeter setting and increase all MDAs 60 feet. VDP NA when using Clemson altimeter setting.
 ⚠ Circling Rwy 17, 35 NA at night. 17, 35 helicopter visibility reduction below 1 SM NA.

MALSR


MISSED APPROACH: Climb to 1600 then climbing left turn to 2500 direct ELW VORTAC and hold.

ASOS 120.675	GREER APP CON ★ 118.8 270.275	CTAF 123.6
------------------------	---	----------------------



ELEV 782	TDZE 758
----------	----------

FAF to MAP 5.4 NM

Knots	60	90	120	150	180
Min:Seq	5:24	3:36	2:42	2:10	1:48

SE-2, 30 NOV 2023 to 28 DEC 2023

SE-2, 30 NOV 2023 to 28 DEC 2023