

BEAUFORT, SOUTH CAROLINA

RNAV (GPS) RWY 14

WAAS Chan 91240 W14A	APCH CRS 140°	Rwy Idg TDZE Arpt Elev 8000 32 37
--	-------------------------	--

[USN]

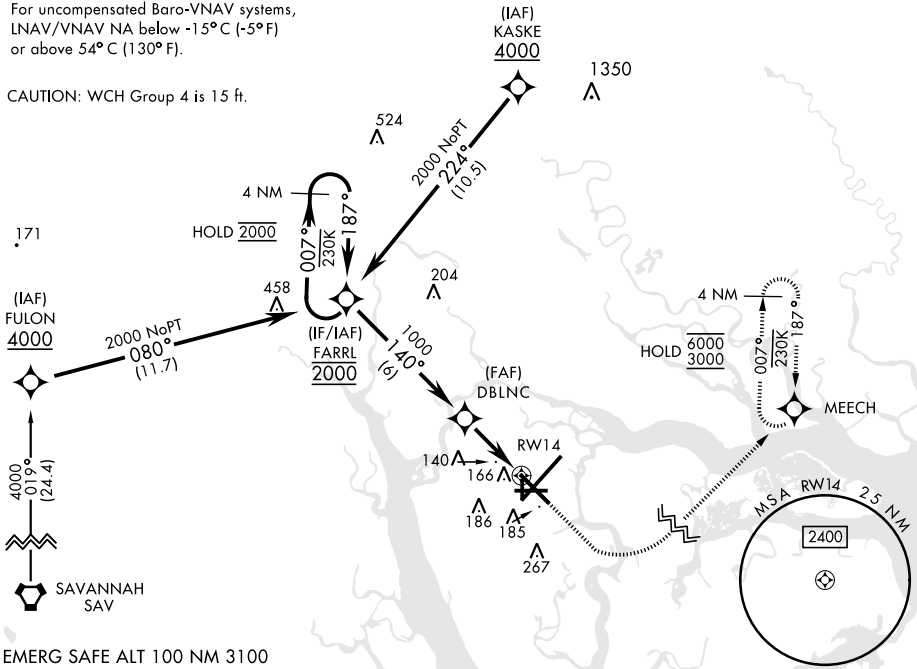
BEAUFORT MCAS (MERRITT FLD) (KNBC)

RNP APCH - DME/DME RNP-0.3 NA	MISSED APPROACH: Climb to 700, then climbing left turn to 3000 direct MEECH and hold.
RADAR required for arrivals via KASKE or FARRL IAFs.	

ATIS ★ 279.525	APP CON (ABV 3000) 125.125 292.125 (3000 and BLW) 123.7 269.125	TOWER ★ 119.05 342.875	GND CON 128.15 348.625	CLNC DEL 128.15 254.375	ASR/ PAR
--------------------------	---	----------------------------------	----------------------------------	-----------------------------------	-------------

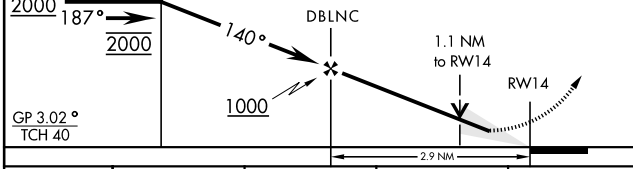
For uncompensated Baro-VNAV systems,
LNAV/VNAV NA below -15°C (-5°F)
or above 54°C (130°F).

CAUTION: WCH Group 4 is 15 ft.

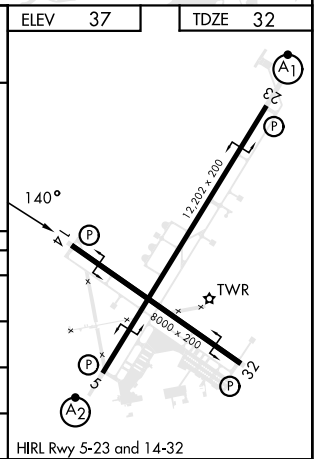


EMERG SAFE ALT 100 NM 3100

4 NM Holding Pattern FARRL	700	3000	MEECH	ELEV 37	TDZE 32
----------------------------	-----	------	-------	---------	---------



CATEGORY	A	B	C	D
LPV DA	233-3/4	200	(200-3/4)	
LNAV/ VNAV DA	420-1 1/8	387	(400-1 1/8)	
LNAV MDA	420-1	387	(400-1)	420-1 1/8 387 (400-1 1/8)
C CIRCLING	500-1	463	(500-1)	580-1 1/2 543 (600-1 1/2) 600-2 563 (600-2)



BEAUFORT, SOUTH CAROLINA

32°29'N-80°43'W

BEAUFORT MCAS (MERRITT FLD) (KNBC)

Amdt 4 01DEC22

RNAV (GPS) RWY 14

SE-2, 30 NOV 2023 to 28 DEC 2023

SE-2, 30 NOV 2023 to 28 DEC 2023