

WAAS CH 50505 W14A	APP CRS 136°	Rwy ldg 6500 TDZE 266 Apt Elev 272
--	------------------------	---

RNAV (GPS) RWY 14

HARDY-ANDERS FLD/NATCHEZ-ADAMS COUNTY (HE/Z)

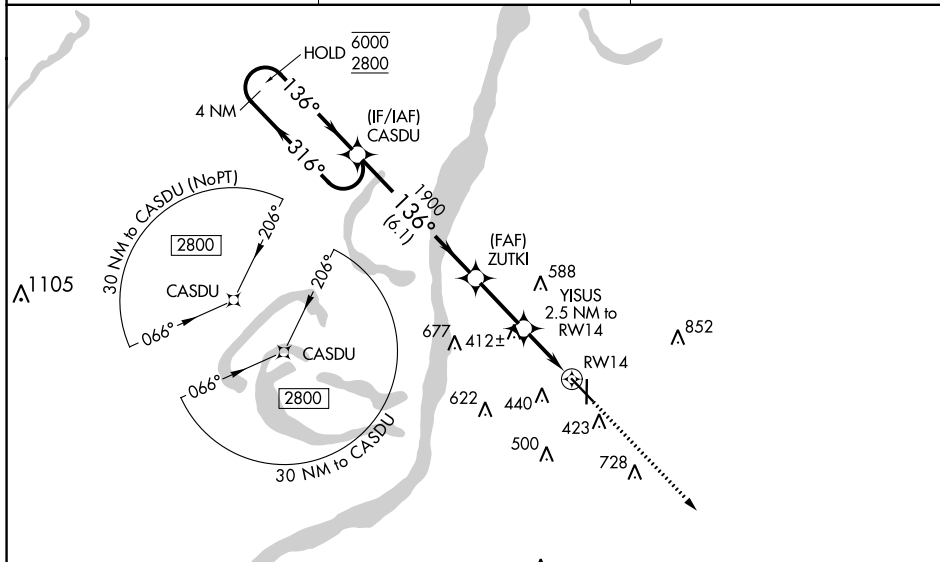
RNP APCH - GPS.

⚠ Circling Rwy 36 NA at night. Rwy 14 helicopter visibility reduction below 3/4 SM NA. For uncompensated Baro-VNAV systems, LNAV/VNAV NA below -15° C or above 54° C. For inop ALS, increase LNAV Cats C and D visibility to 1 1/8 SM. Inop table does not apply to LPV, LNAV/VNAV, and LNAV Cats A and B.

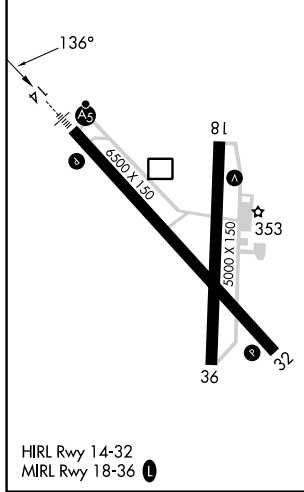
MALSR

MISSED APPROACH: Climb to 2800 direct WEGRA and hold.

AWOS-3PT 124.675	HOUSTON CENTER 120.975 299.6	UNICOM 122.8 (CTAF)
----------------------------	--	-------------------------------



ELEV 272	TDZE 266
----------	----------



NATCHEZ, MISSISSIPPI
Amdt 1C 20APR23

HARDY-ANDERS FLD/NATCHEZ-ADAMS COUNTY (HE/Z)
31°37'N-91°18'W

RNAV (GPS) RWY 14

4 NM Holding Pattern 6000 ← 316° 2800 → 136°	CASDU	ZUTKI	YISUS 2.5 NM to RW14	WEGRA
	GP 3.00° TCH 54	1900 1100	1.1 NM to RW14	2800 WEGRA
	6.1 NM	2.5 NM	1.4 NM	1.1 NM
CATEGORY LPV DA LNAV/VNAV DA LNAV MDA CIRCLING	A 740-1 468 (500-1)	B 820-1 548 (600-1)	C 1020-2 1/4 748 (800-2 1/4)	D 1220-3 948 (1000-3)

SC-4, 30 NOV 2023 to 28 DEC 2023

SC-4, 30 NOV 2023 to 28 DEC 2023