

LOC I-AVA <b>111.3</b>	APCH CRS <b>177°</b>	Rwy Idg TDZE Arprt Elev <b>12,351</b> <b>900</b> <b>911</b>	AL-5010 [USAF]	GRAND FORKS AFB (KRDR)
---------------------------	-------------------------	--	----------------	------------------------

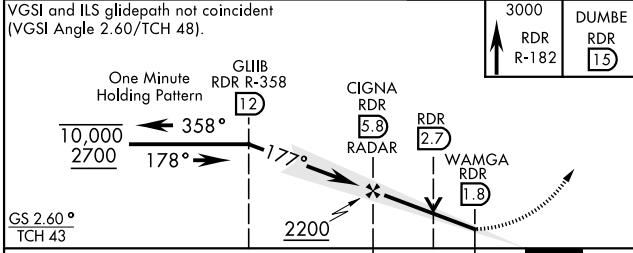
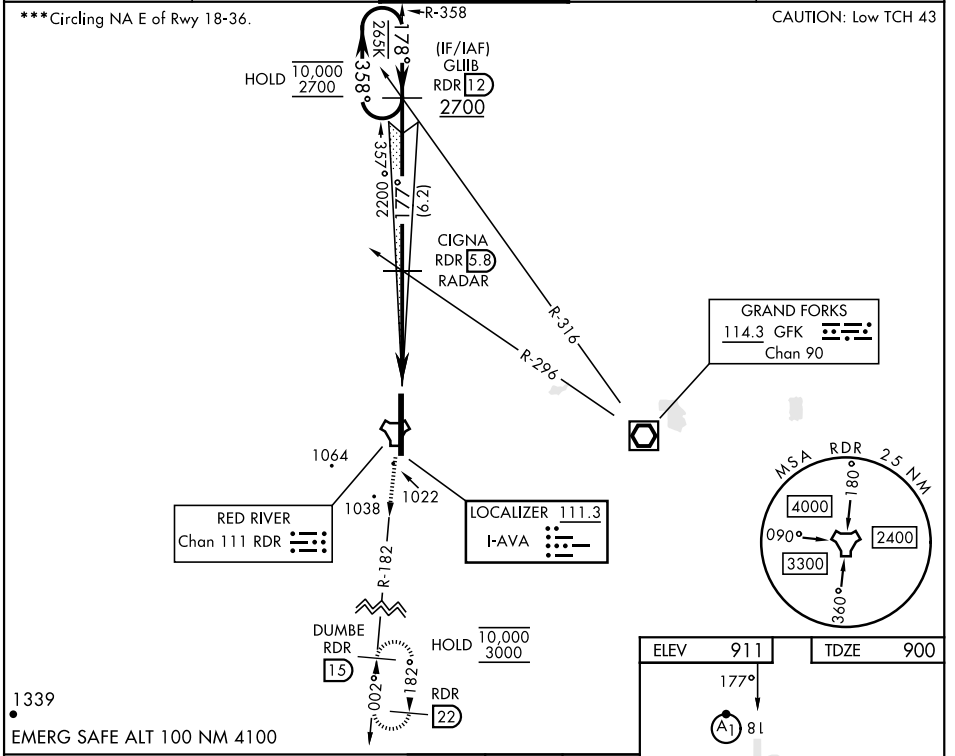
RADAR or DME required.

\* When ALS inop, increase RVR to 40 and vis to ¾ mile.  
 \*\* When ALS inop, increase CAT AB RVR to 55 and vis to 1 mile; CAT CDE vis to 1¼ miles.

ALSF-1

MISSED APPROACH: Climb to 3000 on RDR TACAN R-182 to DUMBE and hold.

ATIS <b>273.45</b>	APP CON <b>118.1 318.1</b>	RED RIVER TOWER <b>124.9 349.0</b>	GND CON <b>119.15 275.8</b>	CLNC DEL <b>119.15 360.7</b>
-----------------------	-------------------------------	---------------------------------------	--------------------------------	---------------------------------



ELEV 911	TDZE 900
----------	----------

HIRL Rwy 18-36

FAF to MAP 4.1 NM					
Knots	60	90	120	150	180
Min:Sec	4:06	2:44	2:03	1:38	1:22

NC-1, 30 NOV 2023 to 28 DEC 2023

NC-1, 30 NOV 2023 to 28 DEC 2023