

GRAND FORKS, NORTH DAKOTA

# TACAN RWY 36

TACAN RDR Chan 111	APCH CRS 351°	Rwy Idg 12,351	TDZE 911
		Arprt Elev 911	

AL-5010 (USAF)

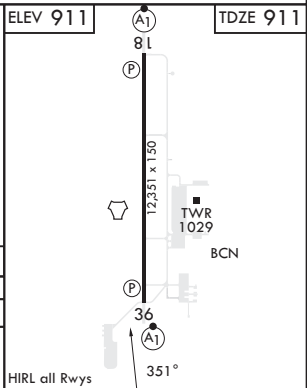
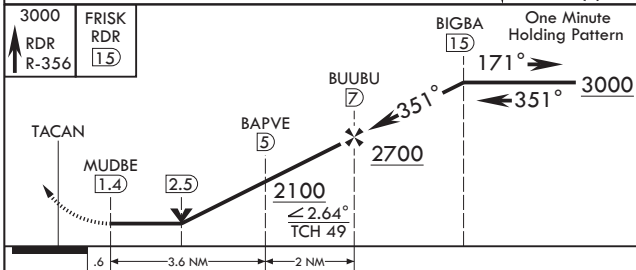
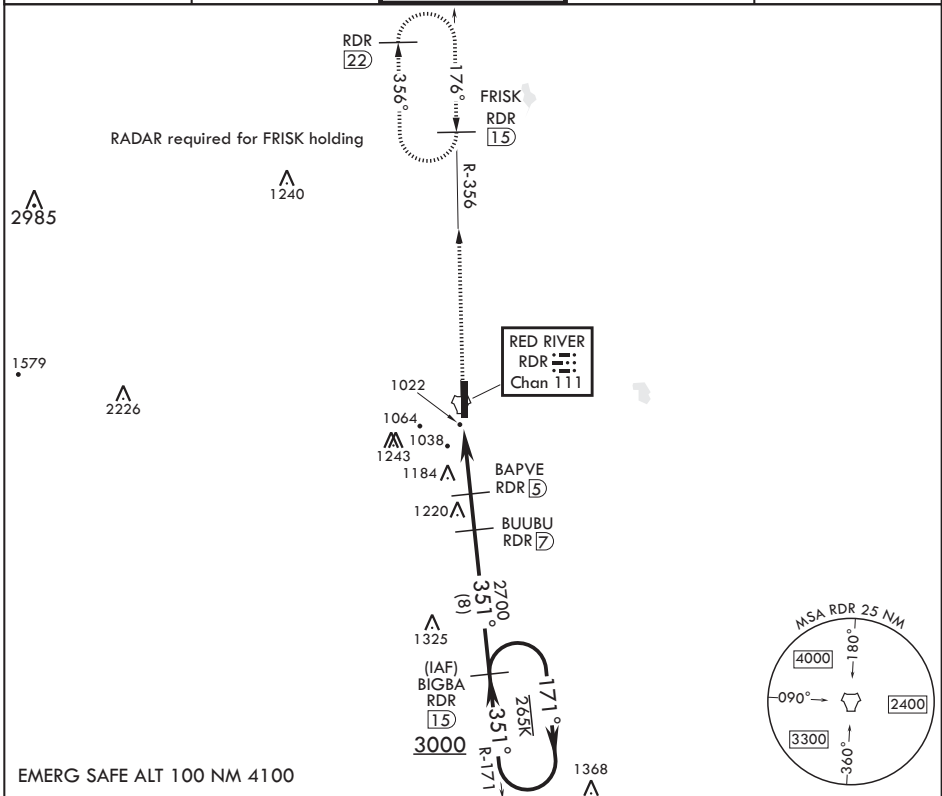
GRAND FORKS AFB (KRDR)

\* When ALS inop, increase CAT AB RVR to 55, vis to 1 mile, CAT CDE vis to 1 1/2 miles.  
 \*\* Circling E of Rwy 18-36 not authorized.



MISSED APPROACH: Climb to 3000 on RDR TACAN R-356 to FRISK and hold.

ATIS 273.45	APP CON 118.1 318.1	RED RIVER TOWER 124.9 349.0	GND CON 119.15 275.8	CLNC DEL 119.15 360.7
----------------	------------------------	--------------------------------	-------------------------	--------------------------



CATEGORY	A	B	C	D	E
S-36*	1440/24	529 (600-1/2)	1440/55	529 (600-1)	
<b>C</b> CIRCLING**	1440-1	529 (600-1)	1440-1 1/2 529 (600-1 1/2)	1540-2 629 (700-2)	1560-2 1/4 649 (700-2 1/4)

GRAND FORKS, NORTH DAKOTA  
 Orig 10AUG23

47°58'N - 97°24'W

GRAND FORKS AFB (KRDR)

# TACAN RWY 36

NC-1, 30 NOV 2023 to 28 DEC 2023

NC-1, 30 NOV 2023 to 28 DEC 2023