

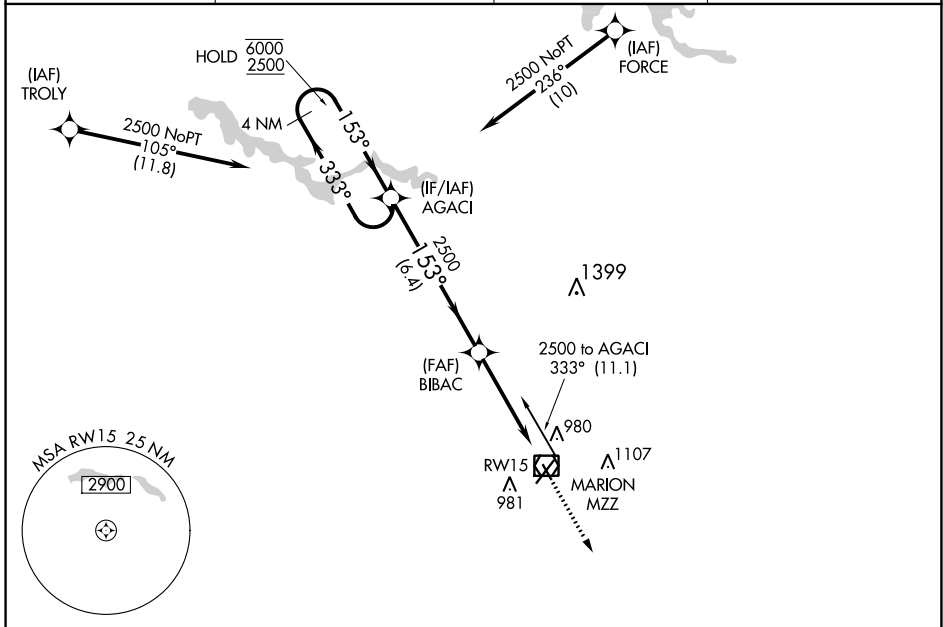
APP CRS 153°	Rwy Idg 3456
	TDZE 859
	Apt Elev 859

RNAV (GPS) RWY 15

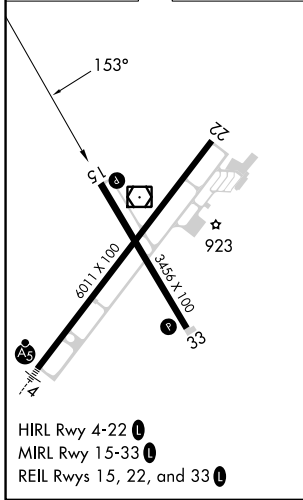
MARION MUNI - MCKINNEY FLD (MZZ)

RNP APCH.		MISSED APPROACH: Climb to 2500 direct AKUYA and hold.	
<p>▽ Rwy 15 helicopter visibility reduction below ¾ SM NA.</p>			

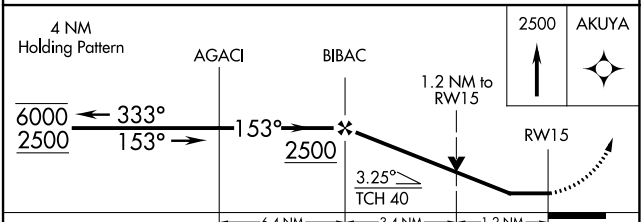
AWOS-3 108.6	GRISSOM APP CON ★ 121.05 338.275	CLNC DEL 120.0	UNICOM 122.7 (CTAF) 0
------------------------	--------------------------------------------	--------------------------	---------------------------------



ELEV 859	TDZE 859
----------	----------



- HIRL Rwy 4-22 0
- MIRL Rwy 15-33 0
- REIL Rws 15, 22, and 33 0



CATEGORY	A	B	C	D
LNAV MDA	1300-1	441 (500-1)	1300-1 3/8	441 (500-1 3/8)
C CIRCLING	1300-1 441 (500-1)	1320-1 461 (500-1)	1400-1 1/2 541 (600-1 1/2)	1500-2 641 (700-2)

EC-2, 30 NOV 2023 to 28 DEC 2023

EC-2, 30 NOV 2023 to 28 DEC 2023