

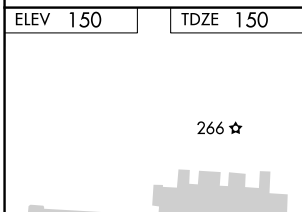
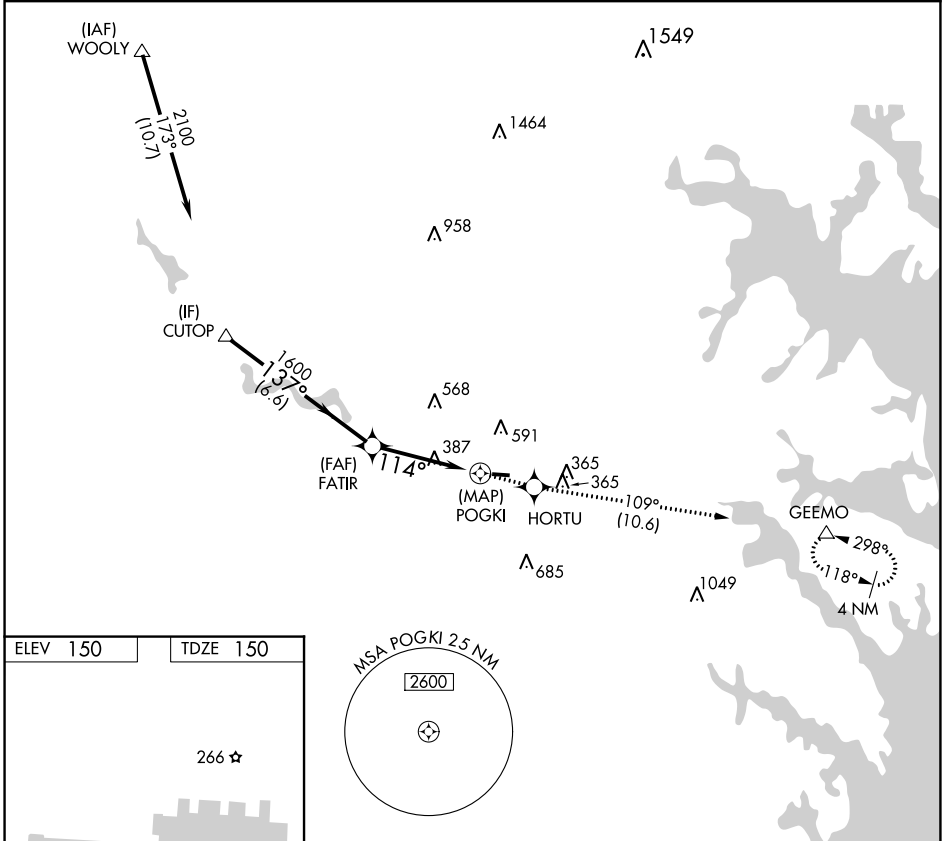
APP CRS <b>114°</b>	Rwy Idg <b>3000</b>
	TDZE <b>150</b>
	Apt Elev <b>150</b>

# RNAV (GPS) RWY 10

TIPTON (FME)

RNP APCH.	MISSED APPROACH: Climb to 2200 direct HORTU and on track 109° to GEEMO and hold.
Procedure NA at night. Rwy 10 helicopter visibility reduction below 1 SM NA.	

AWOS-3 <b>123.925</b>	POTOMAC APP CON <b>119.7 290.475</b>	UNICOM <b>123.05 (CTAF) 0</b>
--------------------------	---	----------------------------------



CUTOP	Visual Segment - Obstacles.	2200	HORTU	tr 109°	GEEMO
2100					
		FATIR	POGKI		
	137°	1600	114°		
	6.6 NM	4 NM	0.5		
CATEGORY	A	B	C	D	
LNNAV MDA	780-1	630 (700-1)			NA
CIRCLING	820-1 670 (700-1)	960-1 810 (900-1)			NA

NE-3, 30 NOV 2023 to 28 DEC 2023

NE-3, 30 NOV 2023 to 28 DEC 2023