

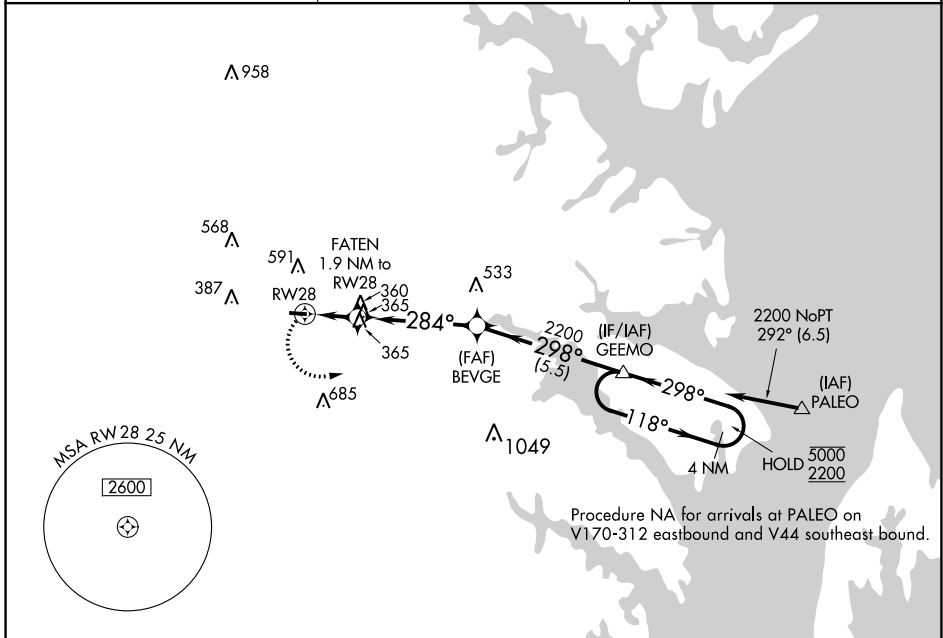
APP CRS 284°	Rwy Idg TDZE Apt Elev	3000 150 150
------------------------	-----------------------------	---

RNAV (GPS) RWY 28

TIPTON (FME)

RNP APCH - GPS.	MISSED APPROACH: Climbing left turn to 2200 direct GEEMO and hold.
Rwy 28 helicopter visibility reduction below 1 SM NA.	

AWOS-3 123.925	POTOMAC APP CON 119.7 290.475	UNICOM 123.05 (CTAF)
--------------------------	---	--------------------------------

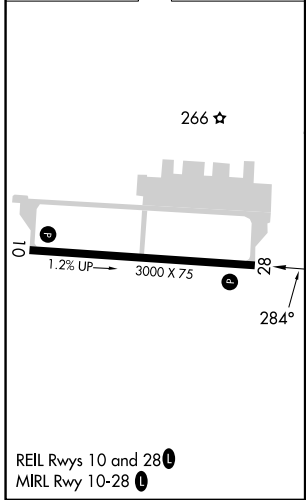


NE-3, 30 NOV 2023 to 28 DEC 2023

NE-3, 30 NOV 2023 to 28 DEC 2023

Procedure NA for arrivals at PALEO on V170-312 eastbound and V44 southeast bound.

ELEV 150	TDZE 150
----------	----------



REIL Rws 10 and 28
MIRL Rwy 10-28

2200	GEEMO	VGSI and descent angles not coincident (VGSI Angle 4.00/TCH 57).		
BEVGE	GEEMO	4 NM Holding Pattern		
FATEN 1.9 NM to RWY 28				
RWY 28				
800	2200	5000		
1.9 NM	4.3 NM	5.5 NM		
≤ 3.05°	TCH 40			
CATEGORY	A	B	C	D
LNAV MDA	620-1	470 (500-1)		NA
CIRCLING	820-1 670 (700-1)	960-1 810 (900-1)		NA