

# FOLZZ TWO DEPARTURE (RNAV)

MIAMI, FLORIDA

ATIS  
124.0  
CLNC DEL  
133.0  
GND CON  
121.7  
TAMIAMI TOWER\*  
118.9 (CTAF)  
MIAMI DEP CON  
125.5 354.1

**TOP ALTITUDE:  
ASSIGNED BY ATC**

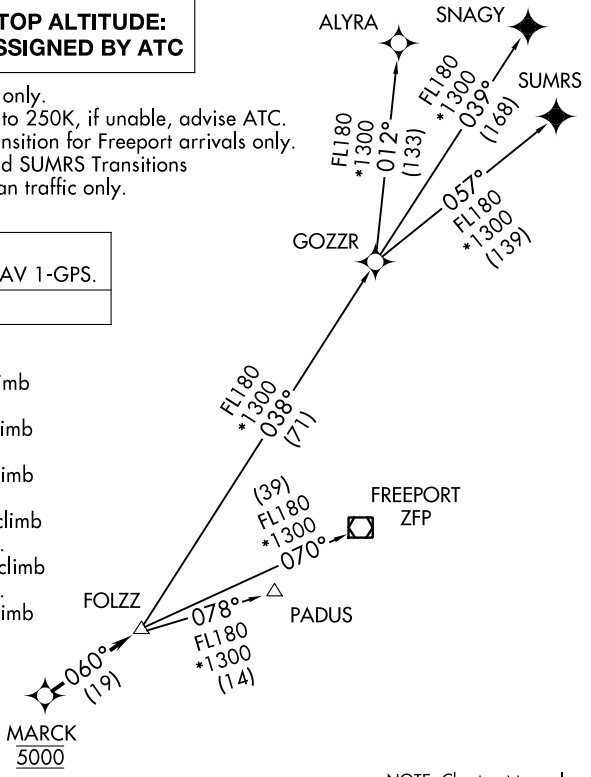
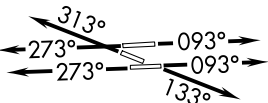
NOTE: Jet aircraft only.  
NOTE: Accelerate to 250K, if unable, advise ATC.  
NOTE: PADUS Transition for Freeport arrivals only.  
NOTE: SNAGY and SUMRS Transitions for European traffic only.

RNAV-1 DME/DME/IRU or GPS.  
SNAGY and SUMRS Transitions: RNAV 1-GPS.

RADAR required.

### TAKEOFF MINIMUMS

- Rwy 9L: Standard with minimum climb of 500' per NM to 1300.
- Rwy 9R: Standard with minimum climb of 500' per NM to 1500.
- Rwy 13: Standard with minimum climb of 500' per NM to 1800.
- Rwy 27L: Standard with minimum climb of 500' per NM to 1900.
- Rwy 27R: Standard with minimum climb of 500' per NM to 1700.
- Rwy 31: Standard with minimum climb of 500' per NM to 1400.



NOTE: Chart not to scale.

### DEPARTURE ROUTE DESCRIPTION

- TAKEOFF RUNWAYS 9L/R: Climb on heading 093° or as assigned for RADAR vectors to cross MARCK at 5000, thence. . .
- TAKEOFF RUNWAY 13: Climb on heading 133° or as assigned for RADAR vectors to cross MARCK at 5000, thence. . .
- TAKEOFF RUNWAYS 27L/R: Climb on heading 273° or as assigned for RADAR vectors to cross MARCK at 5000, thence. . .
- TAKEOFF RUNWAY 31: Climb on heading 313° or as assigned for RADAR vectors to cross MARCK at 5000, thence. . .

. . .on track 060° to FOLZZ, then on transition. Maintain ATC assigned altitude, expect clearance to filed altitude within 10 minutes after departure.

- ALYRA TRANSITION (FOLZZ2.ALYRA)
- FREEPORT TRANSITION (FOLZZ2.ZFP)
- GOZZR TRANSITION (FOLZZ2.GOZZR)
- PADUS TRANSITION (FOLZZ2.PADUS)
- SNAGY TRANSITION (FOLZZ2.SNAGY)
- SUMRS TRANSITION (FOLZZ2.SUMRS)