

# MAYNR ONE DEPARTURE (RNAV)

SE-3, 30 NOV 2023 to 28 DEC 2023

ATIS 124.0  
CLNC DEL 133.0  
GND CON 121.7  
TAMiami TOWER \* 118.9 (CTAF)  
MIAMI DEP CON 125.5 354.1

RNAV1 - DME/DME/IRU or GPS.  
From SUIPT to MAXIM: RNAV 1 - GPS.  
From SUIPT to CANOA: RNAV 1 - GPS.  
RADAR required.

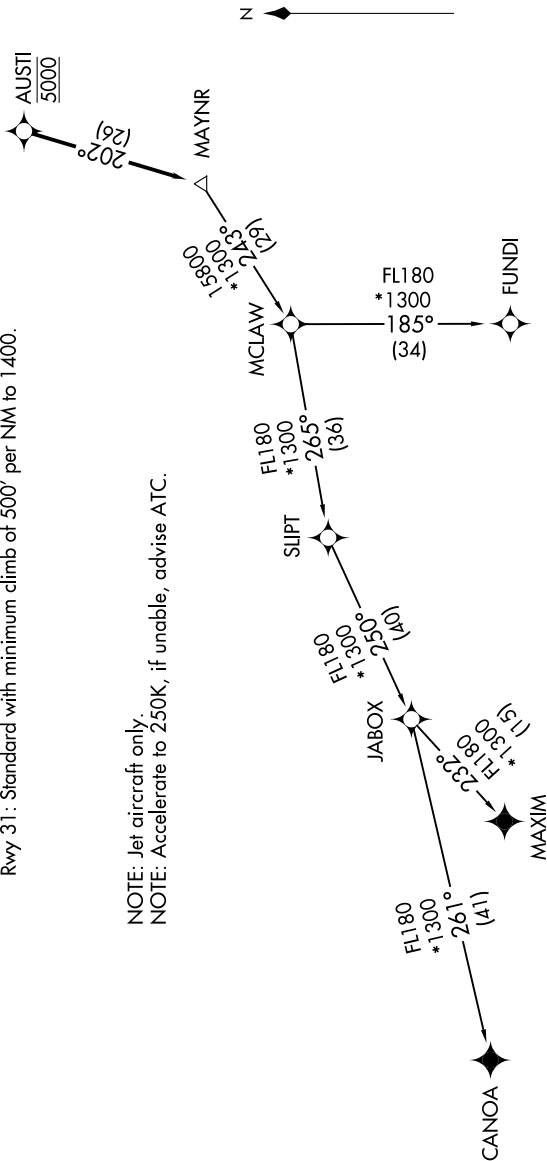
TOP ALTITUDE:  
ASSIGNED BY ATC



### TAKEOFF MINIMUMS

- Rwy 9L: Standard with minimum climb of 500' per NM to 1300.
- Rwy 9R: Standard with minimum climb of 500' per NM to 1500.
- Rwy 13: Standard with minimum climb of 500' per NM to 1800.
- Rwy 27L: Standard with minimum climb of 500' per NM to 1900.
- Rwy 27R: Standard with minimum climb of 500' per NM to 1700.
- Rwy 31: Standard with minimum climb of 500' per NM to 1400.

NOTE: Jet aircraft only.  
NOTE: Accelerate to 250K, if unable, advise ATC.



NOTE: Chart not to scale.

(NARRATIVE ON FOLLOWING PAGE)

SE-3, 30 NOV 2023 to 28 DEC 2023