

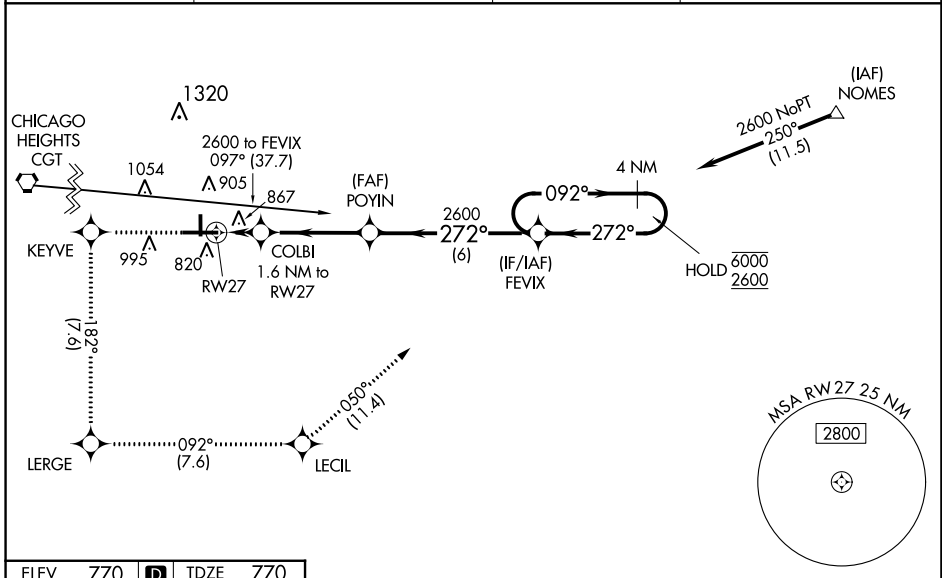
WAAS CH 86806 W27A	APP CRS 272°	Rwy Idg TDZE 770 Apt Elev 770	6500 770 770
--	------------------------	---	---

RNAV (GPS) RWY 27

PORTER COUNTY RGNL (VPZ)

RNP APCH - GPS.	MALSR	MISSED APPROACH: Climb to 2600 direct KEYVE and on track 182° to LERGE and on track 092° to LECIL and on track 050° to FEVIX and hold.
<p>⚠ For uncompensated Baro-VNAV systems, LNAV/VNAV NA below -16°C or above 54°C. For inop ALS, increase LNAV Cats C and D visibility to 1½ SM.</p>		

ASOS 125.875	SOUTH BEND APP CON * 132.05 257.8	CLNC DEL 120.525	UNICOM 122.725 (CTAF)
------------------------	---	----------------------------	---------------------------------



ELEV 770	D	TDZE 770
----------	----------	----------

	2600	KEYVE	↑	182°	LERGE	↑	092°	LECIL	↑	050°	FEVIX	4 NM Holding Pattern GP 3.00° TCH 50
CATEGORY	A		B		C		D					
LPV DA			1020-½		250 (300-½)							
LNAV/VNAV DA			1201-¾		431 (500-¾)							
LNAV MDA	1180-½		410 (500-½)		1180-¾		410 (500-¾)					
CIRCLING	1260-1 490 (500-1)		1300-1 530 (600-1)		1360-1½ 590 (600-1½)		1620-2¾ 850 (900-2¾)					

HIRL Rwy 9-27 **1**
MIRL Rwy 18-36 **1**
REIL Rwy 9, 18 and 36 **1**

EC-2, 30 NOV 2023 to 28 DEC 2023

EC-2, 30 NOV 2023 to 28 DEC 2023