

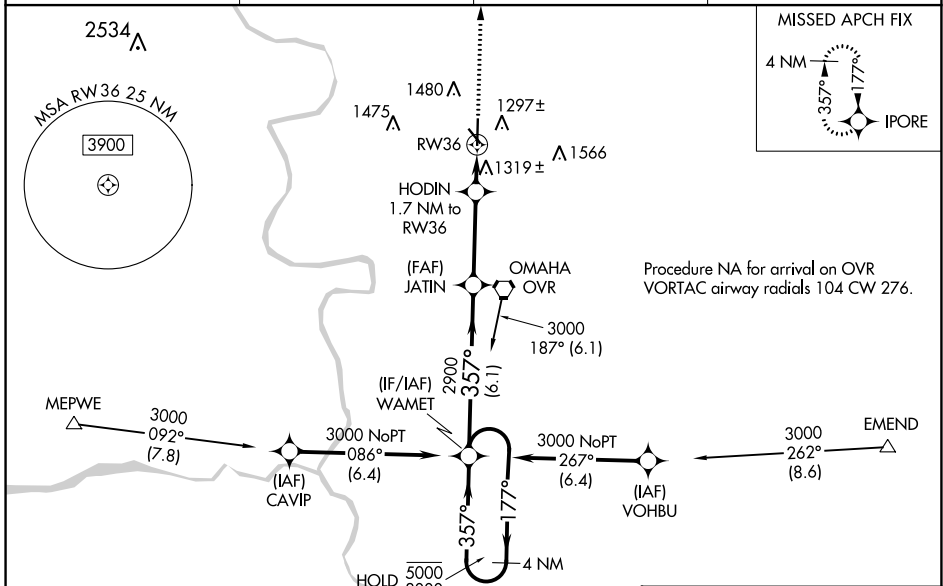
WAAS CH 53606 W36A	APP CRS 357°	Rwy Idg TDZE 1245 Apt Elev 1245
---------------------------------	------------------------	---

RNAV (GPS) RWY 36

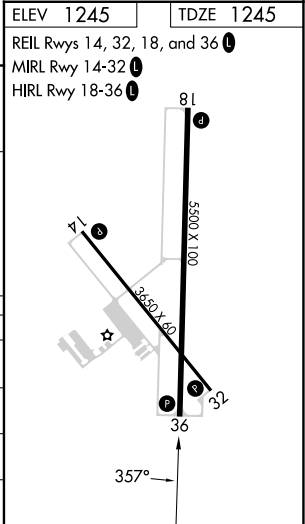
COUNCIL BLUFFS MUNI (CBF)

RNP APCH.	<p>MISSED APPROACH: Climb to 3000 direct IPORE and hold.</p>
<p>⚠ Baro-VNAV and VDP NA when using Eppley Airfield altimeter setting. For uncompensated Baro-VNAV systems, LNAV/VNAV NA below -17°C or above 54°C. When local altimeter setting not received, use Eppley Airfield altimeter setting and increase LPV DA to 1498 feet, LNAV/VNAV DA to 1548 feet, and all MDA 60 feet and increase LNAV/VNAV all Cats visibility 1/2 SM, LNAV Cat C and D visibility 1/2 SM, and Circling Cat C and D visibility 1/4 SM.</p>	

AWOS-3 126.575	OMAHA APP CON 124.5 263.0	CLNC DEL 127.675	UNICOM 122.725 (CTAF) 📻
--------------------------	-------------------------------------	----------------------------	--



4 NM Holding Pattern 5000 ← 177° 3000 → 357° GP 3.00° TCH 50	WAMET	JATIN	HODIN	IPORE
	4 NM	6.1 NM	3.4 NM	0.8 NM
			1.7 NM to RW36	*0.9 NM to RW36
				*1820
CATEGORY	A	B	C	D
LPV DA		1445-3/4	200 (200-3/4)	
LNAV/VNAV DA		1495-3/4	250 (300-3/4)	
LNAV MDA		1580-1	335 (400-1)	
C CIRCLING	1780-1 535 (600-1)	1840-1 595 (600-1)	1840-1 1/2 595 (600-1 1/2)	1880-2 635 (700-2)



NC-3, 30 NOV 2023 to 28 DEC 2023

NC-3, 30 NOV 2023 to 28 DEC 2023