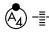


NDB JXT <b>346</b>	APP CRS <b>054°</b>	Rwy Idg TDZE Apt Elev	<b>5717</b> <b>1313</b> <b>1313</b>
-----------------------	------------------------	-----------------------------	---

# NDB RWY 5

MOORE-MURRELL (MOR)

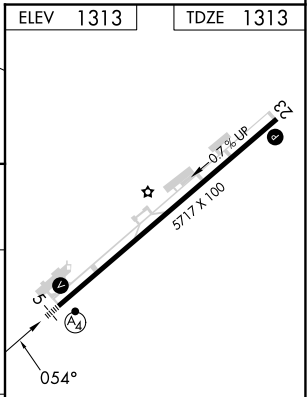
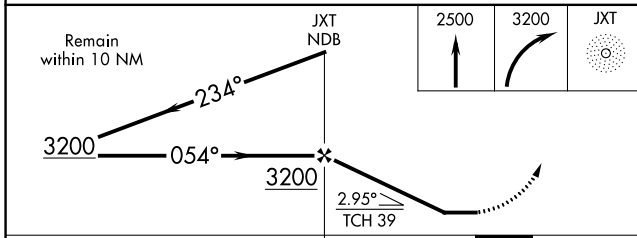
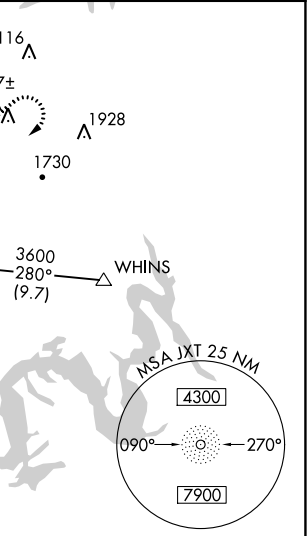
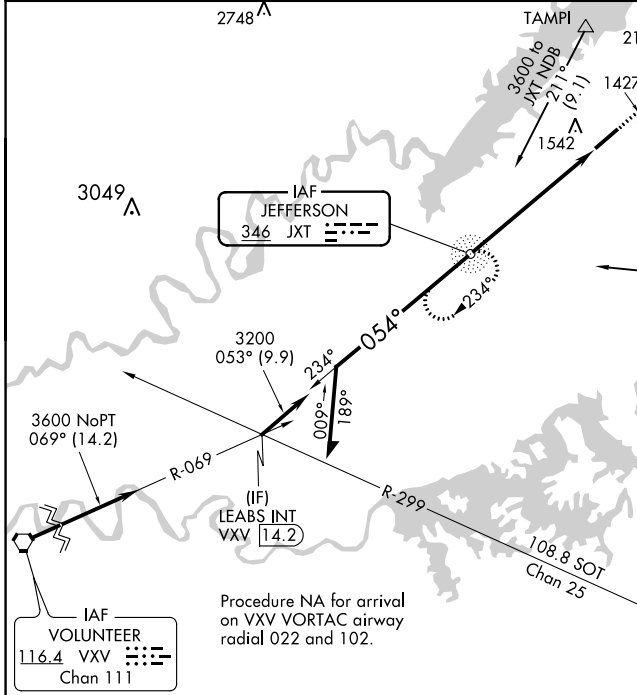
**NA** When local altimeter setting not received, use Mc Ghee Tyson altimeter setting and increase all MDA 140 feet, increase S-5 Cats C/D visibility to 2 SM, and Circling Cat B visibility to 1 1/4 SM and Cat C visibility to 3 SM. For inop MALSF, increase S-5 Cats C and D visibility to 1 7/8 miles. For inop MALSF, when using Mc Ghee Tyson altimeter setting, increase S-5 Cat B visibility to 1 1/4 miles and Cats C and D visibility to 2 1/2 miles.

**MALSF**  
  
**MISSED APPROACH:**  
 Climb to 2500 then climbing right turn to 3200 direct JXT NDB and hold.

AWOS-3  
**126.725**

KNOXVILLE APP CON  
**132.8 360.8**

UNICOM  
**122.8 (CTAF) 0**



CATEGORY	A	B	C	D
S-5	1960-3/4 647 (700-3/4)	647 (700-3/4)	1960-1 1/2 847 (900-2 1/2)	647 (700-1 1/2)
CIRCLING	1960-1 647 (700-1)	2020-1 707 (800-1)	2160-2 1/2 847 (900-2 1/2)	2420-3 1107 (1200-3)

FAF to MAP 5.9 NM					
Knots	60	90	120	150	180
Min:Sec	5:54	3:56	2:57	2:22	1:58