

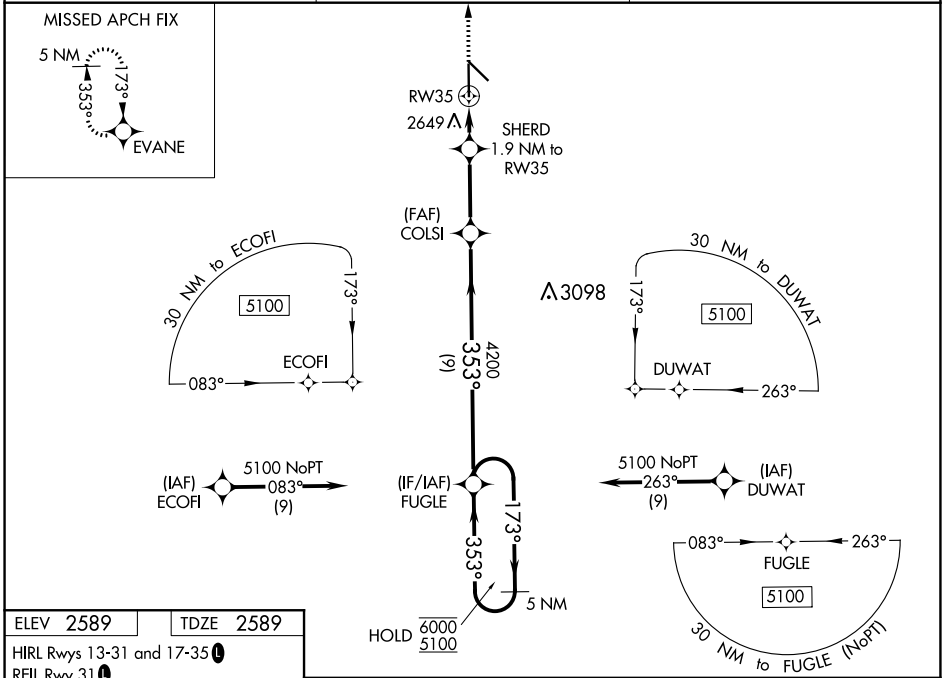
WAAS CH 81917 W35A	APP CRS 353°	Rwy Idg TDZE Apt Elev	6824 2589 2589
----------------------------------------	------------------------	-----------------------------	-------------------------------------------

RNAV (GPS) RWY 35

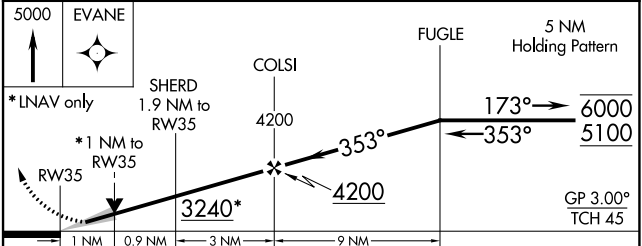
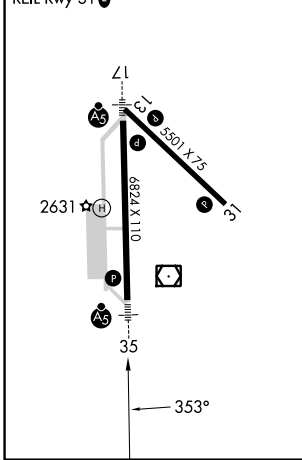
AINSWORTH RGNL (A.N.W)

RNP APCH.	MALSR 	MISSED APPROACH: Climb to 5000 direct EVANE and hold.
<p>▽ For uncompensated Baro-VNAV systems, LNAV/VNAV NA below -20°C or above 54°C. For inop ALS, increase LNAV/VNAV all Cats visibility to 3/4 SM and LNAV Cats C and D visibility to 1 SM.</p>		

AWOS-3 118.325	DENVER CENTER 127.95 338.2	UNICOM 122.8 (CTAF)
--------------------------	--------------------------------------	-------------------------------



ELEV 2589	TDZE 2589
HIRL Rwy 13-31 and 17-35	
REIL Rwy 31	



5000	EVANE	SHERD 1.9 NM to RWY 35	COLSI 4200	FUGLE 5 NM Holding Pattern	6000	5100	GP 3.00°	TCH 45
*LNAV only		*1 NM to RWY 35	3240*	4200	173°	353°		
1 NM	0.9 NM	3 NM	9 NM					
CATEGORY	A	B	C	D				
LPV DA		2789-1/2	200 (200-1/2)					
LNAV/VNAV DA		2839-1/2	250 (300-1/2)					
LNAV MDA	2960-1/2	371 (400-1/2)	2960-5/8	371 (400-5/8)				
C CIRCLING	3000-1	3040-1	3040-1 1/2	3200-2				
	411 (500-1)	451 (500-1)	451 (500-1 1/2)	611 (700-2)				

NC-2, 30 NOV 2023 to 28 DEC 2023

NC-2, 30 NOV 2023 to 28 DEC 2023