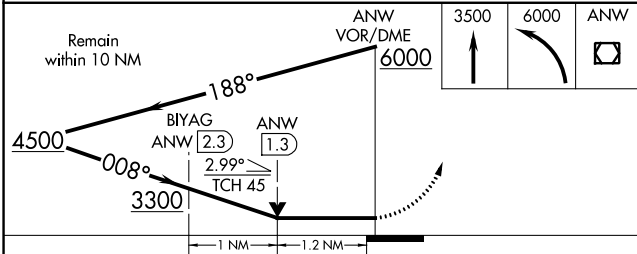
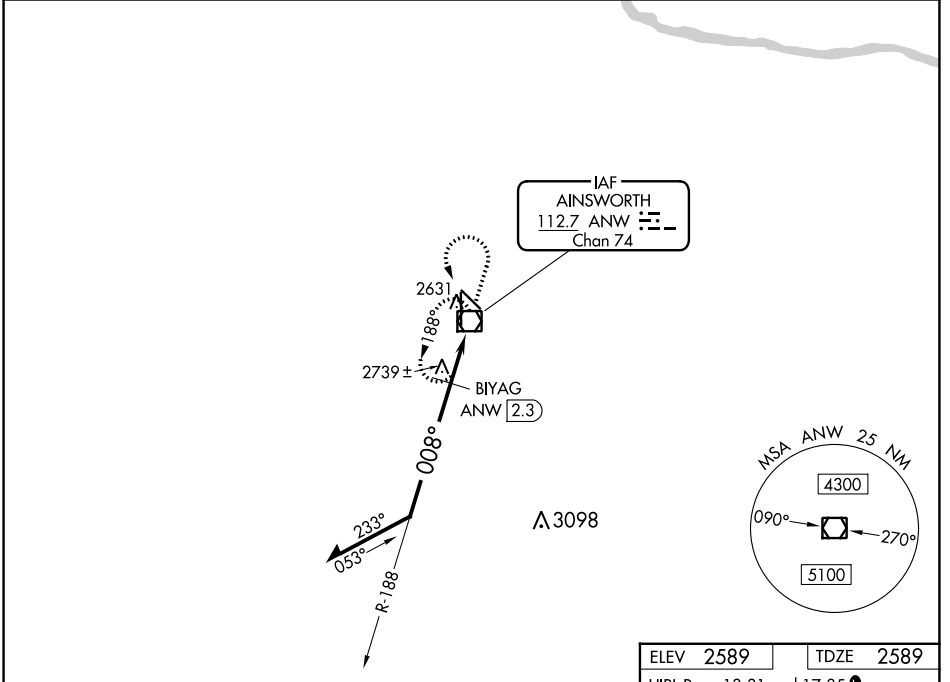


VOR/DME ANW <b>112.7</b> Chan 74	APP CRS <b>008°</b>	Rwy Idg TDZE Apt Elev	<b>6824</b> <b>2589</b> <b>2589</b>
--	------------------------	-----------------------------	---

**VOR RWY 35**  
AINSWORTH RGNL (A.N.W)

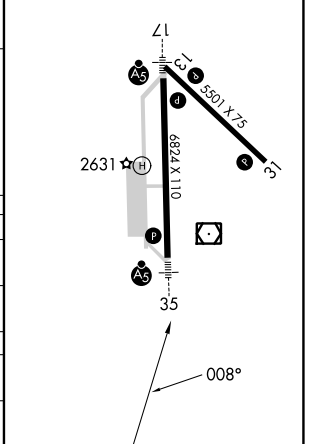
<p><b>▼</b> When local altimeter setting not received, procedure NA. <b>▲</b> For inoperative ALS, increase BIYAG fix minimums S-35 Cat D visibility to 1¼.</p>	<p>MALSR </p>	<p>MISSED APPROACH: Climb to 3500 then climbing left turn to 6000 direct ANW VOR/DME and hold.</p>
---	-------------------	--

AWOS-3 <b>118.325</b>	DENVER CENTER <b>127.95 338.2</b>	UNICOM <b>122.8 (CTAF) 1</b>
--------------------------	--------------------------------------	---------------------------------



ELEV 2589	TDZE 2589
-----------	-----------

HIRL Rwy 13-31 and 17-35 1  
REIL Rwy 31 1



CATEGORY	A	B	C	D
S-35	3300-½	711 (800-½)	3300-1½ 711 (800-1½)	3300-1¾ 711 (800-1¾)
<b>C</b> CIRCLING	3300-1	711 (800-1)	3300-2 711 (800-2)	3300-2¼ 711 (800-2¼)
<b>BIYAG FIX MINIMUMS (DME REQUIRED)</b>				
S-35	3000-½	411 (500-½)	3000-¾ 411 (500-¾)	3000-1 411 (500-1)
<b>C</b> CIRCLING	3000-1 411 (500-1)	3040-1 451 (500-1)	3040-1½ 451 (500-1½)	3200-2 611 (700-2)

NC-2, 30 NOV 2023 to 28 DEC 2023

NC-2, 30 NOV 2023 to 28 DEC 2023