

TROY, ALABAMA

AL-5720 (FAA)

22363

WAAS CH 53506 W32A	APP CRS 327°	Rwy Idg TDZE 393 Apt Elev 397	5024
--	------------------------	---	-------------

RNAV (GPS) RWY 32

TROY MUNI AT N KENNETH CAMPBELL FLD (TOI)

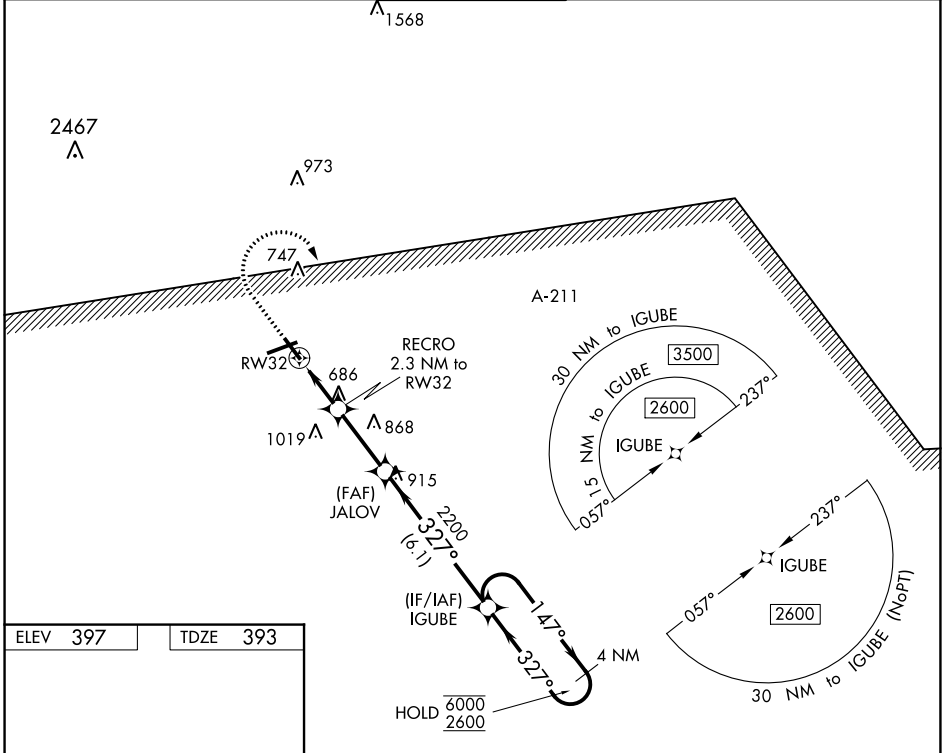
RNP APCH.

ASR/PAR

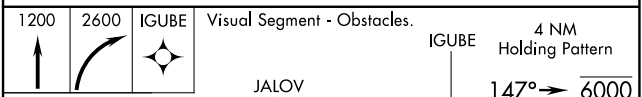
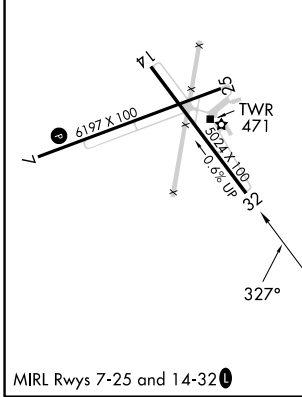
Rwy 32 helicopter visibility reduction below 1 SM NA.
Rwy 32 Straight-in and Circling and Circling Rwy 14 NA at night.

MISSED APPROACH: Climb to 1200 then climbing right turn to 2600 direct IGUBE and hold.

ATIS 120.925	CAIRNS APP CON* 121.1 319.25	TROY TOWER* 124.3 (CTAF) 306.9	GND CON 121.9 294.7	UNICOM 122.8
------------------------	--	--	-------------------------------	------------------------



ELEV 397	TDZE 393
----------	----------



RECRO 2.3 NM to RWY 32	JALOV	IGUBE	4 NM Holding Pattern
1240	2200	6000	2600
2.3 NM	2.8 NM	6.1 NM	

CATEGORY	A	B	C	D
LP MDA	940-1	547 (600-1)	940-1 ⁵ / ₈	547 (600-1 ⁵ / ₈)
LNAV MDA	960-1	567 (600-1)	960-1 ³ / ₄	567 (600-1 ³ / ₄)
C CIRCLING	1000-1	603 (700-1)	1300-2 ³ / ₄ 903 (1000-2 ³ / ₄)	1380-3 983 (1000-3)

TROY, ALABAMA
Amdt 1D 29DEC22

TROY MUNI AT N KENNETH CAMPBELL FLD (TOI)
31°52'N-86°01'W

RNAV (GPS) RWY 32

SE-4, 30 NOV 2023 to 28 DEC 2023

SE-4, 30 NOV 2023 to 28 DEC 2023