

LOC/DME I-OAJ 108.7 Chan 24	APP CRS 052°	Rwy Idg TDZE Apt Elev	7100 89 93
---	------------------------	-----------------------------	---------------------------------------

ILS or LOC RWY 5

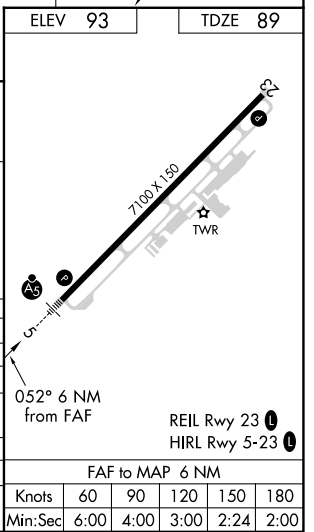
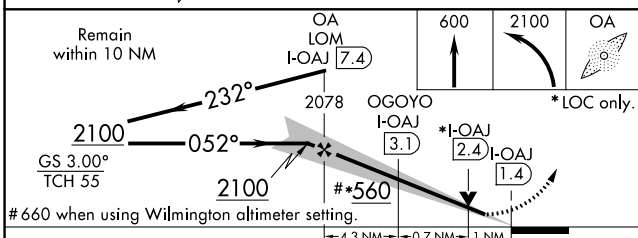
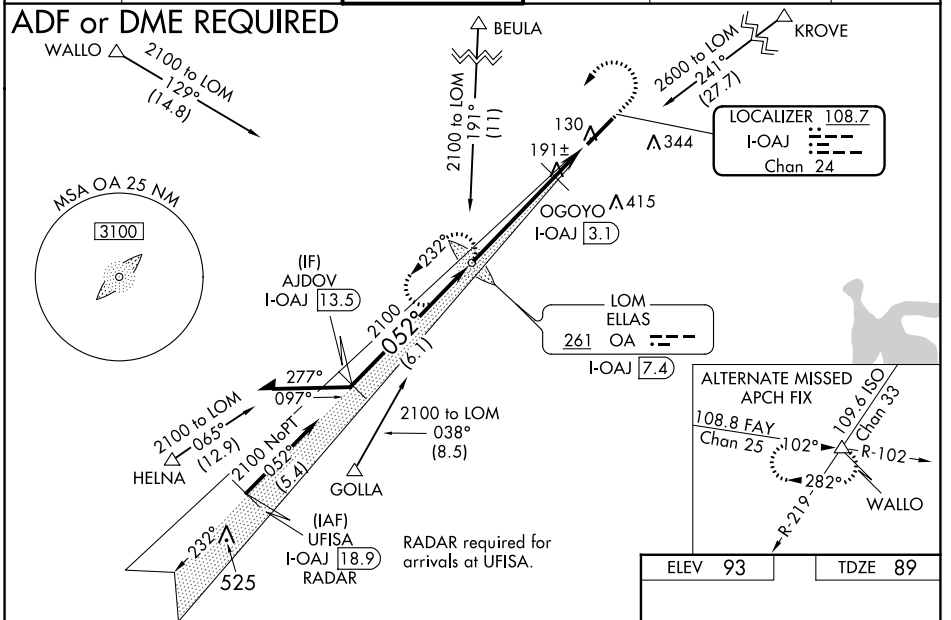
ALBERT J ELLIS (OAJ)

VDP NA with Wilmington altimeter setting. When local altimeter setting not received, use Wilmington altimeter setting and increase all DA to 382 feet; increase all MDAs 100 feet and visibility S-LOC 5 Cats C/D and Circling Cats C/D ¼ SM; OGOYO fix minimums: increase visibility S-LOC 5 Cats C/D ⅓ SM and Circling Cats C/D ¼ SM. For inoperative MALSR, increase S-LOC 5 Cats C/D visibility to ⅓ mile, increase OGOYO fix minimums S-LOC 5 Cats C/D visibility to 1 mile. For inoperative MALSR when using Wilmington altimeter setting, increase S-ILS 5 all Cats visibility to ⅓ mile, increase S-LOC 5 Cats C/D visibility to 1 mile, increase OGOYO fix minimums S-LOC 5 Cats C/D visibility to ⅓ mile. ADF required.

MALSR

MISSED APPROACH:
Climb to 600 then climbing left turn to 2100 direct ELLAS LOM/I-OAJ 7.4 DME and hold.

ATIS 124.475	WILMINGTON APP CON ★ 135.75 317.425	ELLIS TOWER ★ 132.65 (CTAF)	GND CON 125.4	CLNC DEL 121.4 257.6 (when twr closed)	UNICOM 122.95
------------------------	---	---------------------------------------	-------------------------	---	-------------------------



CATEGORY	A	B	C	D
S-ILS 5	289-½ 200 (200-½)			
S-LOC 5	560-½	471 (500-½)	560-1	471 (500-1)
CIRCLING	560-1	467 (500-1)	720-1¾ 627 (700-1¾)	720-2 627 (700-2)
OGOYO FIX MINIMUMS (DME REQUIRED)				
S-LOC 5	460-½	371 (400-½)	460-¾	371 (400-¾)
CIRCLING	540-1	560-1	720-1¾ 627 (700-1¾)	720-2 627 (700-2)

SE-2, 30 NOV 2023 to 28 DEC 2023

SE-2, 30 NOV 2023 to 28 DEC 2023