

| | | | |
|--|------------------------|-----------------------------|---|
| WAAS CH 58109 W02A | APP CRS 021° | Rwy Idg TDZE Apt Elev | 7026 913 913 |
|--|------------------------|-----------------------------|---|

RNAV (GPS) RWY 2

DE KALB TAYLOR MUNI (DKB)

▼ Baro-VNAV NA when using Aurora altimeter setting. For uncompensated Baro-VNAV systems, LNAV/VNAV NA below -16°C (4°F) or above 47°C (116°F). DME/DME RNP-0.3 NA. VDP NA when using Aurora altimeter setting. When local altimeter setting not received, use Aurora altimeter setting and increase all DA 61 feet and all MDA 80 feet; increase all LPV and LNAV/VNAV visibilities, LNAV Cats C/D visibility, and Circling Cats C/D visibility ¼ mile. For inop MALSR, increase LPV all Cats visibility to 1.

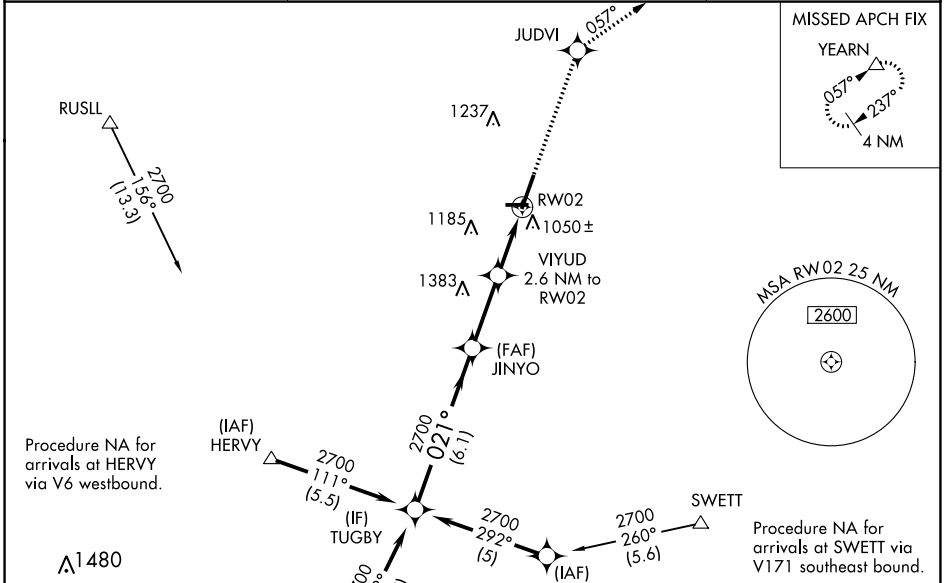
MALSR

MISSED APPROACH:
Climb to 3000 direct JUDVI and via 057° track to YEARN and hold.

AWOS-3
119.075

CHICAGO APP CON
133.5 349.0

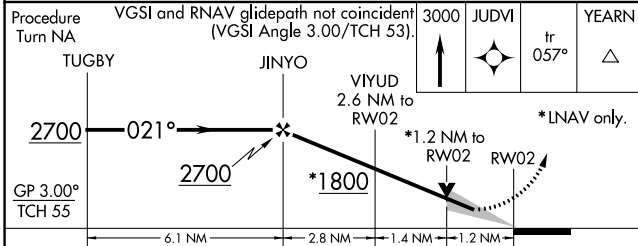
UNICOM
122.7 (CTAF)



EC-3, 30 NOV 2023 to 28 DEC 2023

EC-3, 30 NOV 2023 to 28 DEC 2023

| | |
|-----------------------|----------|
| ELEV 913 | TDZE 913 |
| REIL Rwy 9, 20 and 27 | |
| MIRL Rwy 2-20 | |
| MIRL Rwy 9-27 | |



| CATEGORY | A | B | C | D |
|--------------|--------------------|--------------------|--------------------|----------------------|
| LPV DA | | 1207-½ | 294 (300-½) | |
| LNAV/VNAV DA | | 1360-1 | 447 (500-1) | |
| LNAV MDA | 1360-½ 447 (500-½) | | 1360-¾ 447 (500-¾) | 1360-1 447 (500-1) |
| CIRCLING | 1360-1 447 (500-1) | 1500-1 587 (600-1) | 1600-2 687 (700-2) | 1740-2¾ 827 (900-2¾) |

