

APP CRS	Rwy Idg	5001
093°	TDZE	790
	Apt Elev	790

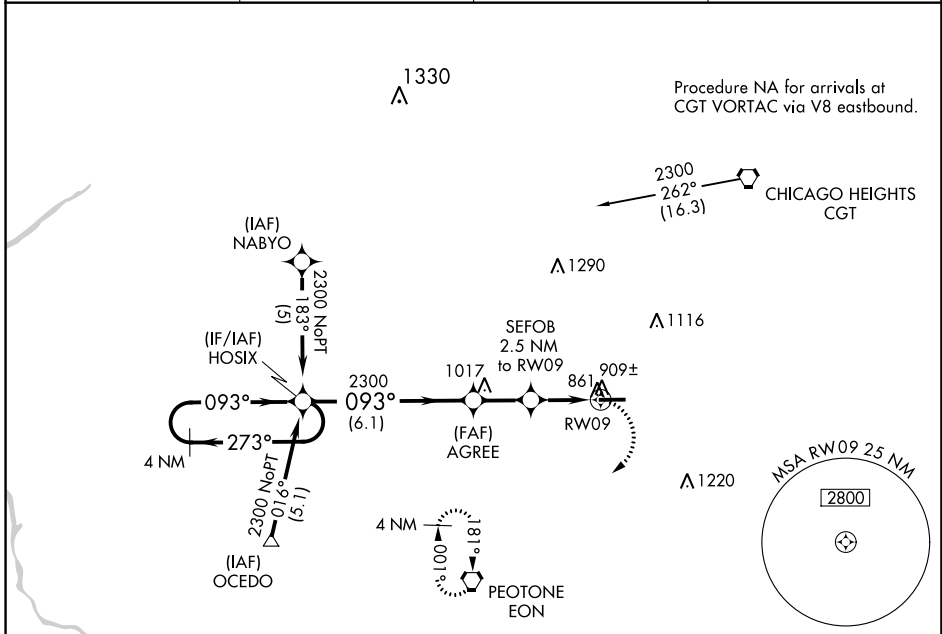
RNAV (GPS) RWY 9

BULT FLD (C56)

NA DME/DME RNP-0.3 NA. Visibility reduction by helicopters NA. Use Lansing Muni altimeter setting; when not received, use Chicago Midway Intl altimeter setting and increase all MDA 40 feet. Procedure NA at night.

MISSED APPROACH: Climbing right turn to 2600 direct EON VORTAC and hold.

AWOS-AV 119.125	IGQ AWOS-3PT 119.275	CHICAGO CENTER 132.5 284.7	UNICOM 123.0 (CTAF)
---------------------------	--------------------------------	--------------------------------------	-------------------------------



EC-3, 30 NOV 2023 to 28 DEC 2023

EC-3, 30 NOV 2023 to 28 DEC 2023

ELEV 790	TDZE 790
----------	----------



	4 NM Holding Pattern		EON	
	HOSIX		AGREE	
	2300 ← 273°		3.04° TCH 40	
	093° →		SEFOB 2.5 NM to RWY09	
	2300		1620	
	6.1 NM		2.1 NM	
			2.5 NM	
CATEGORY	A	B	C	D
LNAV MDA	1220-1	430 (500-1)	1220-1¼ 430 (500-1¼)	NA
CIRCLING	1260-1 470 (500-1)	1400-1½ 610 (700-1½)	1400-1¾ 610 (700-1¾)	NA

