

WAAS CH 45816 W18A	APP CRS 184°	Rwy ldg 4000 TDZE 752 Apt Elev 754
---------------------------------	------------------------	---

RNAV (GPS) RWY 18

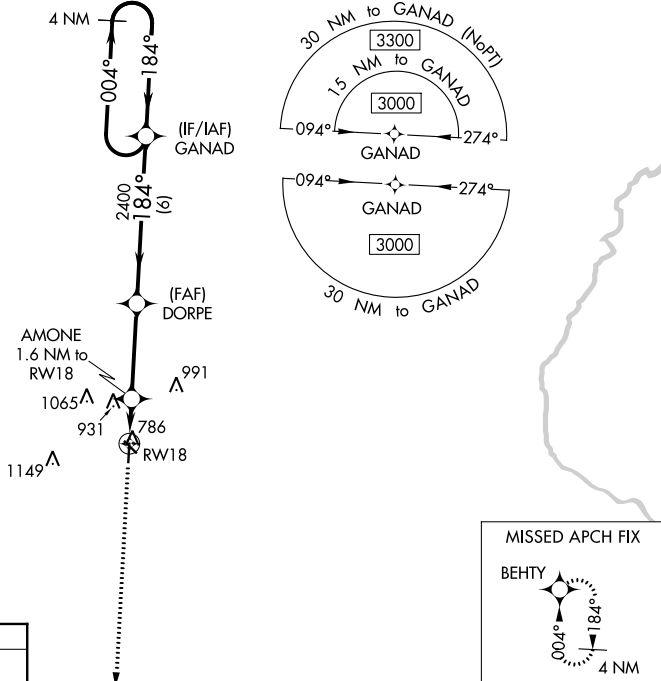
WASHINGTON MUNI (A WG)

RNP APCH.

▼ For uncompensated Baro-VNAV systems, LNAV/VNAV NA below -6°C (22°F) or above 54°C (130°F).
 ▲ Baro-VNAV NA when using Iowa City altimeter setting. When local altimeter setting not received, use Iowa City altimeter setting: increase LPV DA to 1064 feet, LNAV/VNAV DA to 1116 feet; increase all MDA 80 feet and visibility LNAV and Circling Cat C ¼ SM.

MISSED APPROACH:
 Climb to 3000 direct
 BEHTY and hold.

AWOS-3 127.825	CHICAGO CENTER 135.6 370.95	UNICOM 122.7 (CTAF) 0
--------------------------	---------------------------------------	---------------------------------

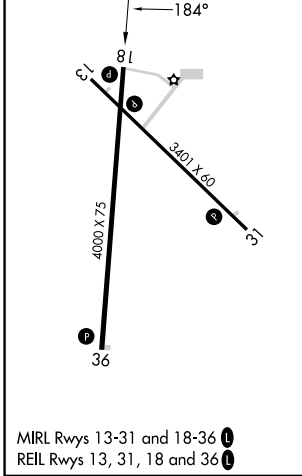


NC-3, 30 NOV 2023 to 28 DEC 2023

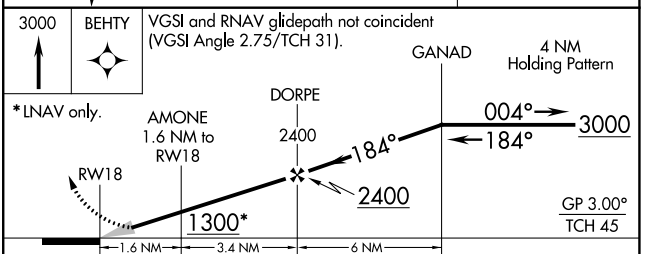
NC-3, 30 NOV 2023 to 28 DEC 2023



ELEV 754	TDZE 752
----------	----------



MIRL Rwy 13-31 and 18-36
 REL Rwy 13, 31, 18 and 36



CATEGORY	A	B	C	D
LPV DA		1002-1 250 (300-1)		NA
LNAV/VNAV DA		1054-1 302 (300-1)		NA
LNAV MDA	1160-1	408 (500-1)	1160-1½ 408 (500-1½)	NA
C CIRCLING	1200-1 446 (500-1)	1260-1 506 (600-1)	1500-2¼ 746 (800-2¼)	NA