

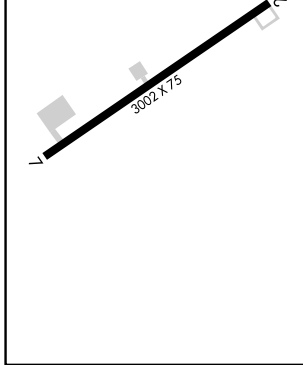
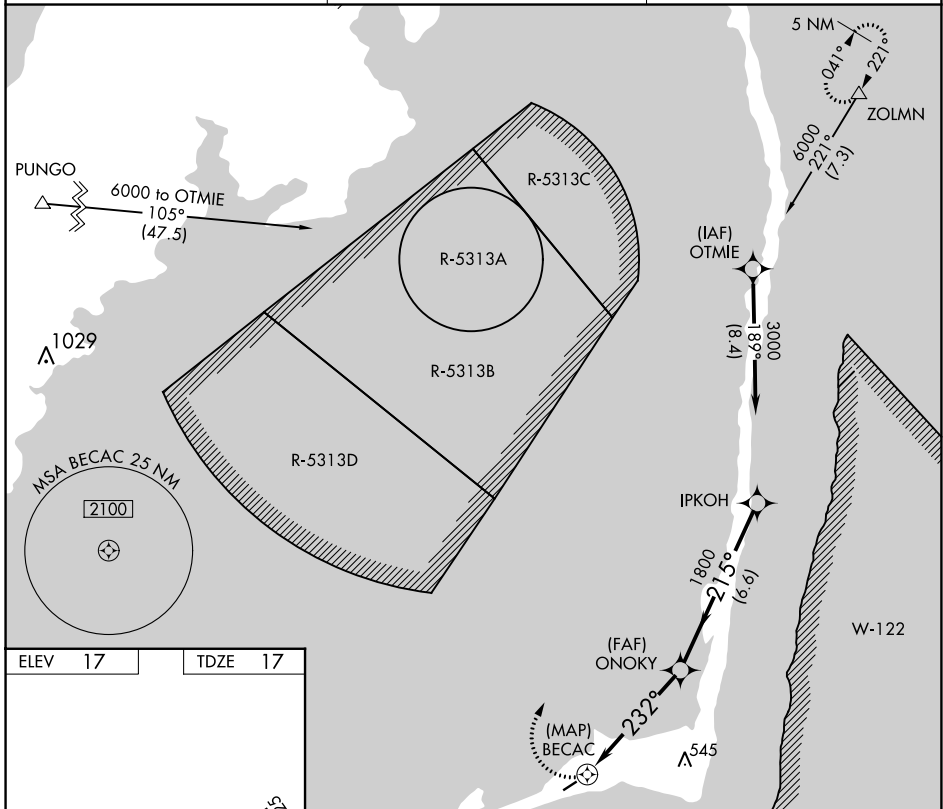
APP CRS <b>232°</b>	Rwy Idg <b>3002</b>
	TDZE <b>17</b>
	Apt Elev <b>17</b>

# RNAV (GPS) RWY 25

BILLY MITCHELL (HSE)

NA Procedure NA at night. GPS or RNP-0.3 required. DME/DME RNP-0.3 NA.	MISSED APPROACH: Climbing right turn to 6000 via course 032° to ZOLMN WP and hold.
---	---

ASOS <b>118.375</b>	CHERRY POINT APP CON <b>119.75 360.775</b>	CTAF <b>122.9</b>
------------------------	---	----------------------



	6000 ZOLMN △ crs 032°	ONOKY	IPKOH
	BECAC	1800	3000
	232°	215°	Procedure Turn NA
	3.00° TCH 40		
	0.5	5 NM	6.6 NM
CATEGORY	A	B	C
LNAV MDA	520-1	503 (600-1)	520-1½ 503 (600-1½)
CIRCLING	560-1	543 (600-1)	560-1½ 543 (600-1½)
	D		
	NA		NA

SE-2, 30 NOV 2023 to 28 DEC 2023

SE-2, 30 NOV 2023 to 28 DEC 2023