

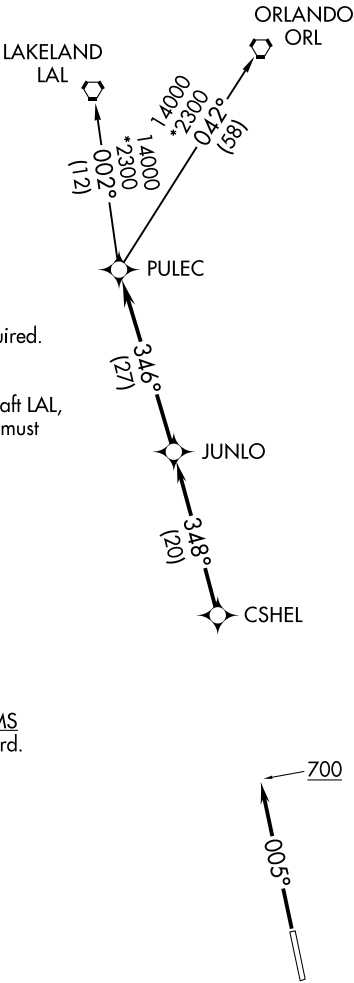
CSHEL SIX DEPARTURE (RNAV)

TOP ALTITUDE:  
2000

CLNC DEL  
120.8  
FORT MYERS DEP CON ★  
124.125 371.85  
UNICOM  
122.7

- NOTE: RADAR required.  
NOTE: DME/DME/IRU or GPS required.  
NOTE: RNAV 1.  
NOTE: For turbojet aircraft only.  
NOTE: For non-GPS equipped aircraft LAL, LBV, RSW, and SRQ DME's must be operational.

TAKEOFF MINIMUMS  
Rwy 17, 35: Standard.



NOTE: Chart not to scale.



DEPARTURE ROUTE DESCRIPTION

TAKEOFF RWY 17: Climb on assigned heading for RADAR vectors to CSHEL, then on depicted route to PULEC, thence. . . .  
TAKEOFF RWY 35: Climb heading 005° to 700, then on RADAR vectors to CSHEL, then on depicted route to PULEC, thence. . . .

. . . .on (transition). Maintain 2000, or as assigned by ATC, expect filed altitude/flight level 10 minutes after departure.

LAKELAND TRANSITION (CSHEL6.LAL)  
ORLANDO TRANSITION (CSHEL6.ORL)

CSHEL SIX DEPARTURE (RNAV)