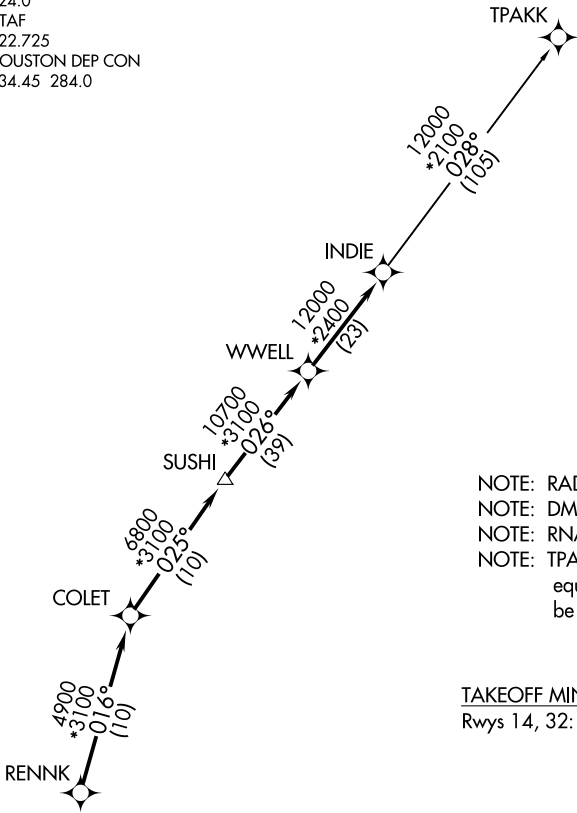


ASOS
118.525
CLNC DEL
124.0
CTAF
122.725
HOUSTON DEP CON
134.45 284.0

TOP ALTITUDE:
ASSIGNED BY ATC



- NOTE: RADAR required.
NOTE: DME/DME/IRU or GPS required.
NOTE: RNAV 1.
NOTE: TPAKK TRANSITION: For non GPS equipped aircraft TNV DME must be operational.

TAKEOFF MINIMUMS
Rwys 14, 32: Standard with minimum climb of 500' per NM to 560.

DEPARTURE ROUTE DESCRIPTION

TAKEOFF RUNWAY 14: Climb on heading 142° to 1600 for RADAR vectors to RENNK, thence . . .
TAKEOFF RUNWAY 32: Climb on heading 322° to 700 for RADAR vectors to RENNK, thence . . .

. . . on track 016° to COLET, then on track 025° to SUSHI, then on track 026° to WWELL, then on track 026° to INDIE, then on (transition).
Maintain ATC assigned altitude. Expect filed altitude 10 minutes after departure.

TPAKK TRANSITION (INDIE8.TPAKK)

NOTE: Chart not to scale.