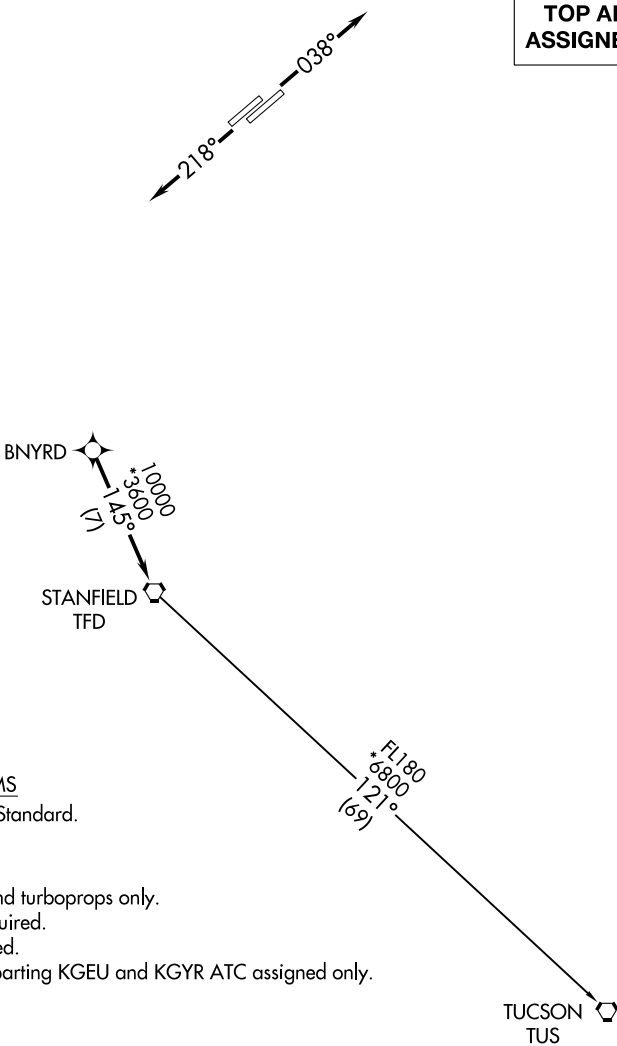


ATIS
128.325
GND CON
124.4
CHANDLER TOWER ★
126.1 (Rwy 4L-22R)
133.1 (Rwy 4R-22L)
PHOENIX DEP CON
123.7 363.0

TOP ALTITUDE:
ASSIGNED BY ATC



TAKEOFF MINIMUMS
Rwys 4L/R, 22L/R: Standard.

- NOTE: RNAV 1.
- NOTE: Turbojets and turboprops only.
- NOTE: RADAR required.
- NOTE: GPS required.
- NOTE: Aircraft departing KGEU and KGYR ATC assigned only.

NOTE: Chart not to scale.



DEPARTURE ROUTE DESCRIPTION

TAKEOFF RUNWAYS 4L/R: Climb heading 038° or as assigned by ATC, thence. . . .
TAKEOFF RUNWAYS 22L/R: Climb heading 218° or as assigned by ATC, thence. . . .
. . . expect RADAR vectors to BNYRD, then on track 145° to TFD VORTAC, then on (transition), maintain ATC assigned altitude, expect filed altitude 3 minutes after departure.
TUCSON TRANSITION (BNYRD6.TUS)

SW-4, 30 NOV 2023 to 28 DEC 2023

SW-4, 30 NOV 2023 to 28 DEC 2023