

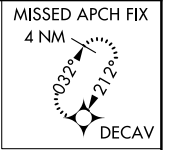
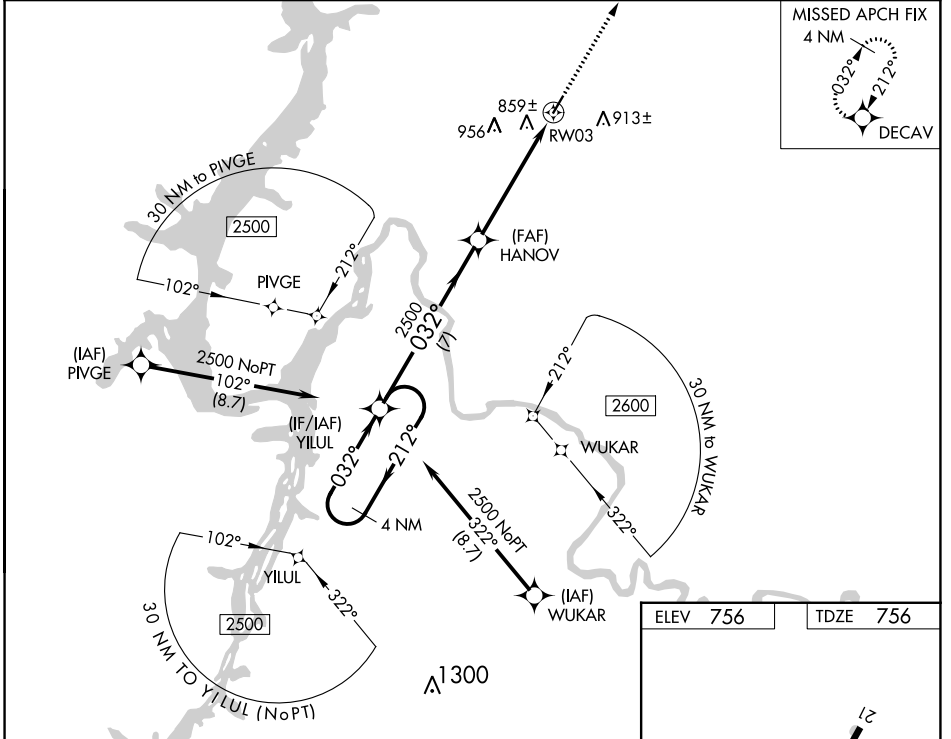
| | | | |
|--|------------------------|-----------------------------|---|
| WAAS CH 90222 W03A | APP CRS 032° | Rwy Idg TDZE Apt Elev | 4000 756 756 |
|--|------------------------|-----------------------------|---|

RNAV (GPS) RWY 3

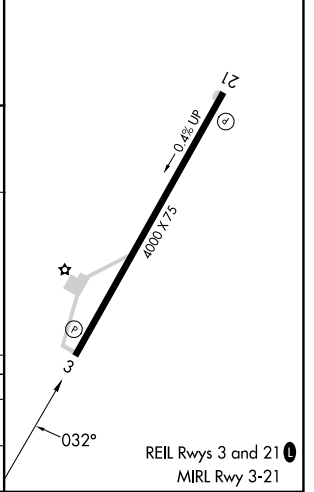
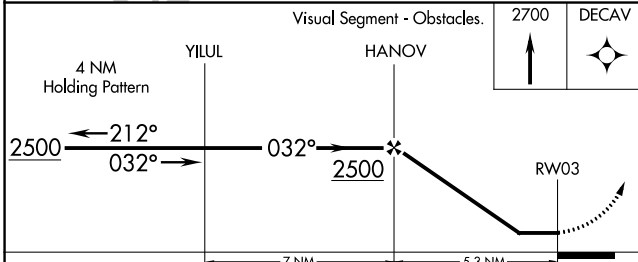
HUMPHREYS COUNTY (ØM5)

| | |
|---|---|
| RNP APCH. | <p>MISSED APPROACH: Climb to 2700 direct DECAV and hold.</p> |
| <p>▽ When local altimeter setting not received, use Nashville Intl altimeter setting and increase all MDA 160 feet; increase LP Cat C and D visibility 3/8 mile, LNAV Cat C and D visibility 1/2 mile. Procedure NA at night. Rwy 3 helicopter visibility reduction below 1 SM NA.</p> | |

| | |
|--|---------------------------------|
| MEMPHIS CENTER 125.85 379.25 | UNICOM 122.8 (CTAF) 0 |
|--|---------------------------------|



| | |
|----------|----------|
| ELEV 756 | TDZE 756 |
|----------|----------|



| CATEGORY | A | B | C | D |
|----------|---|--------|-------------|---|
| LP MDA | | 1100-1 | 344 (400-1) | |
| LNAV MDA | | 1120-1 | 364 (400-1) | |

SE-1, 30 NOV 2023 to 28 DEC 2023

SE-1, 30 NOV 2023 to 28 DEC 2023