

APP CRS **190°**  
 Rwy Idg **5201**  
 TDZE **726**  
 Apt Elev **726**

# RNAV (GPS) RWY 19

JAMES A RHODES (JRO)

RNP APCH - GPS.

**▼** Procedure NA at night.  
**▲** Rwy 19 helicopter visibility reduction below 1 SM NA.

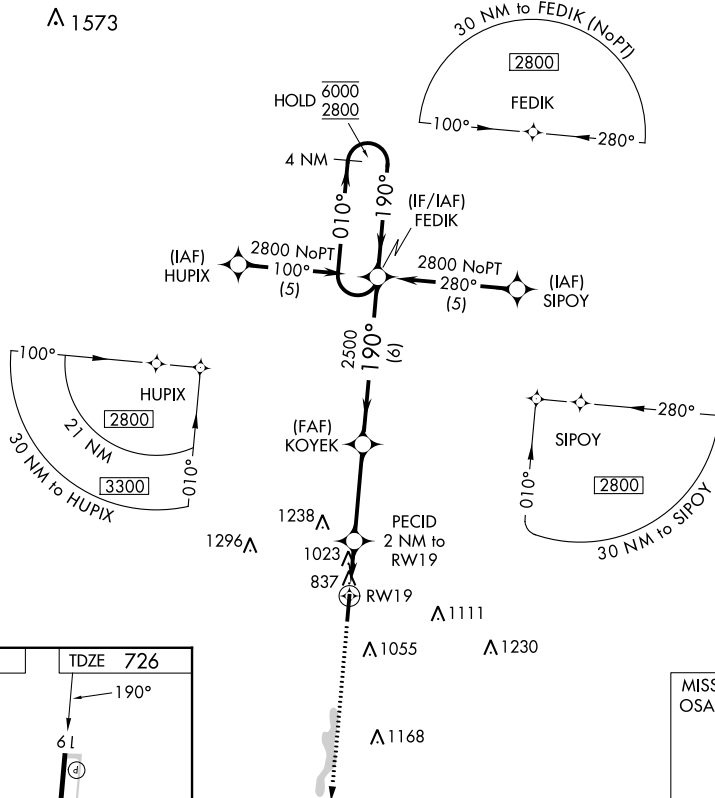
MISSED APPROACH: Climb to 2800 direct OSATE and hold.

AWOS-3  
**118.825**

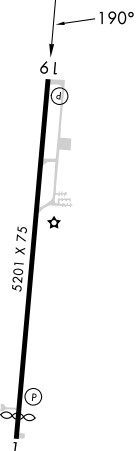
HUNTINGTON APP CON  
**128.4 270.1**

UNICOM  
**122.7 (CTAF) 0**

**▲ 1573**



ELEV **726** TDZE **726**



2800	OSATE	VGSI and descent angles not coincident (VGSI Angle 4.00/TCH 45).		FEDIK	4 NM Holding Pattern
		KOYEK	PECID 2 NM to RWY 19		
RWY 19		3.32° TCH 40	1460	190°	010°
		2 NM	3.5 NM	6 NM	2800
CATEGORY	A	B	C	D	
LNAV MDA	1280-1	554 (600-1)	1280-1½	554 (600-1½)	
CIRCLING	1340-1 614 (700-1)	1480-1 754 (800-1)	1680-3	954 (1000-3)	

MIRL Rwy 1-19 **0**