

WAAS CH 53409 W09A	APP CRS 093°	Rwy Idg TDZE Apt Elev	4000 1082 1082
--	------------------------	-----------------------------	---

RNAV (GPS) RWY 9

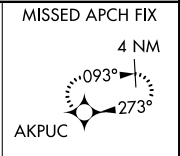
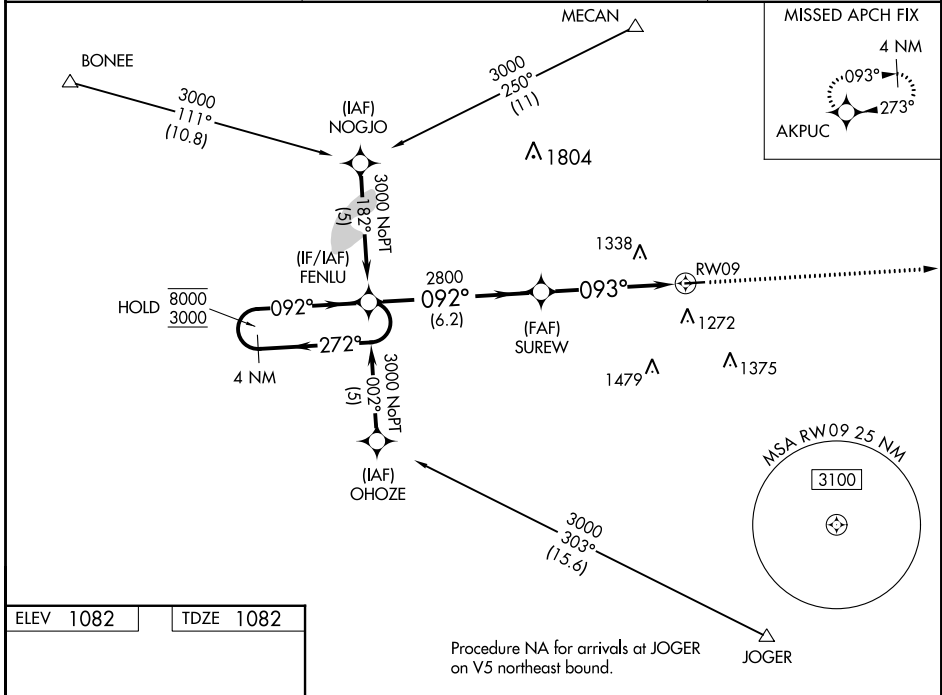
MADISON COUNTY (UYF)

RNP APCH - GPS.

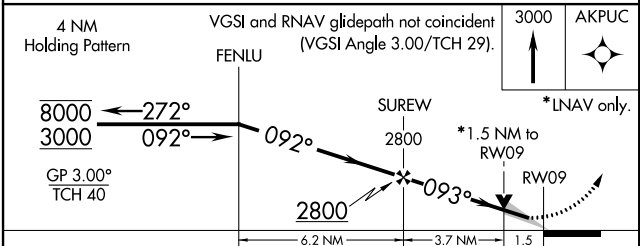
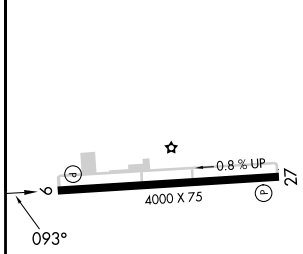
⚠ For uncompensated Baro-VNAV systems, LNAV/VNAV NA below -17°C or above 54°C.

MISSED APPROACH: Climb to 3000 direct AKPUC and hold.

AWOS-3PT 120.85	COLUMBUS APP CON 118.85 269.275	UNICOM 123.0 (CTAF) 0
---------------------------	---	---------------------------------



ELEV 1082	TDZE 1082
-----------	-----------



CATEGORY	A	B	C	D
LPV DA	1332-1 250 (300-1)			
LNAV/VNAV DA	1548-1 ³ / ₄ 466 (500-1 ³ / ₄)			
LNAV MDA	1580-1	498 (500-1)	1580-1 ¹ / ₂ 498 (500-1 ¹ / ₂)	1580-1 ¹ / ₂ 498 (500-1 ¹ / ₂)
CIRCLING	1600-1 518 (600-1)	1640-1 558 (600-1)	1640-1 ¹ / ₂ 558 (600-1 ¹ / ₂)	1840-2 ¹ / ₂ 758 (800-2 ¹ / ₂)

REIL Rwy 9 and 27 **0**
MIRL Rwy 9-27 **0**

EC-2, 30 NOV 2023 to 28 DEC 2023

EC-2, 30 NOV 2023 to 28 DEC 2023