

WAAS CH <b>57917</b> <b>W01A</b>	APP CRS <b>008°</b>	Rwy Idg TDZE <b>969</b> Apt Elev <b>969</b>
--	------------------------	---

# RNAV (GPS) RWY 1

LAFAYETTE MUNI (3M7)

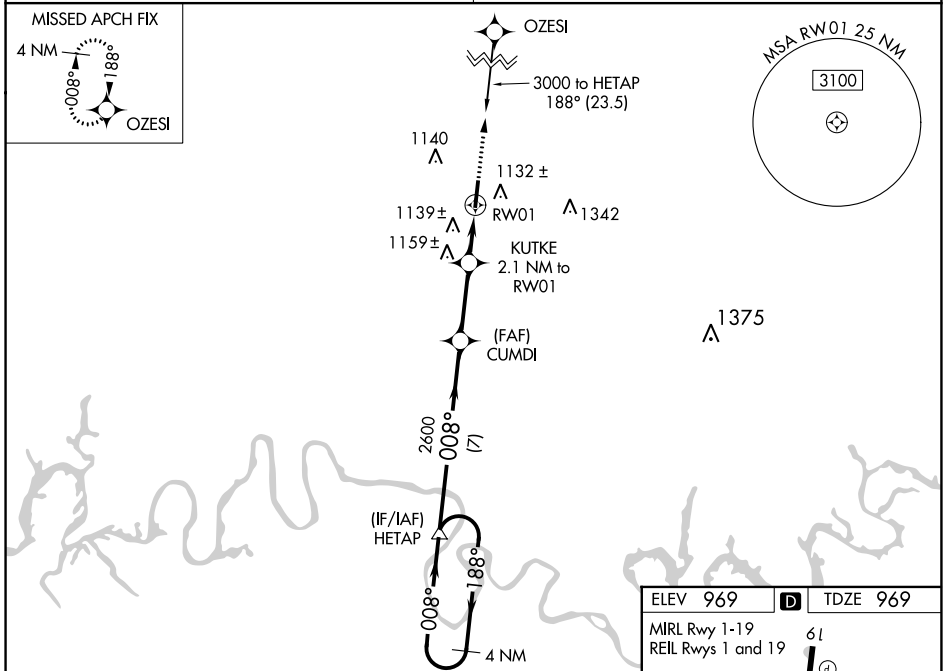
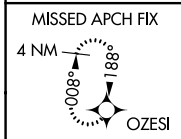
RNP APCH - GPS.

**NA** For uncompensated Baro-VNAV systems, LNAV/VNAV NA below -16°C or above 47°C. Obtain local altimeter setting on CTAF; when not received, use Bowling Green altimeter setting: increase LPV DA to 1441 feet and all visibilities ½ SM; increase LNAV/VNAV DA to 1585 feet and all visibilities ½ SM; increase all MDAs 140 feet and visibility LNAV Cat C and D ¼ SM and Circling Cat C and D ½ SM. VDP and Baro-VNAV NA when using Bowling Green altimeter setting. Rwy 1 helicopter visibility reduction below ¾ SM NA.

**MISSED APPROACH:**  
Climb to 3000 direct OZESI and hold.

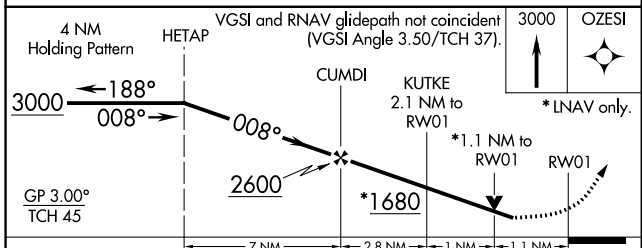
NASHVILLE APP CON  
**118.4 360.7**

UNICOM  
**122.8 (CTAF)**



ELEV 969 **D** TDZE 969

MIRL Rwy 1-19  
REIL Rws 1 and 19



CATEGORY	A	B	C	D
LPV DA		1318-1¼	349 (400-1¼)	
LNAV/VNAV DA		1452-1¾	483 (500-1¾)	
LNAV MDA	1400-1	431 (500-1)	1400-1¼ 431 (500-1¼)	1400-1½ 431 (500-1½)
CIRCLING	1440-1	471 (500-1)	1600-1¾ 631 (700-1¾)	1700-2¼ 731 (800-2¼)

