

VOR/DME RLG <b>113.8</b> Chan <b>85</b>	APP CRS <b>034°</b>	Rwy Idg TDZE Apt Elev <b>N/A</b> <b>N/A</b> <b>7411</b>
---	------------------------	--

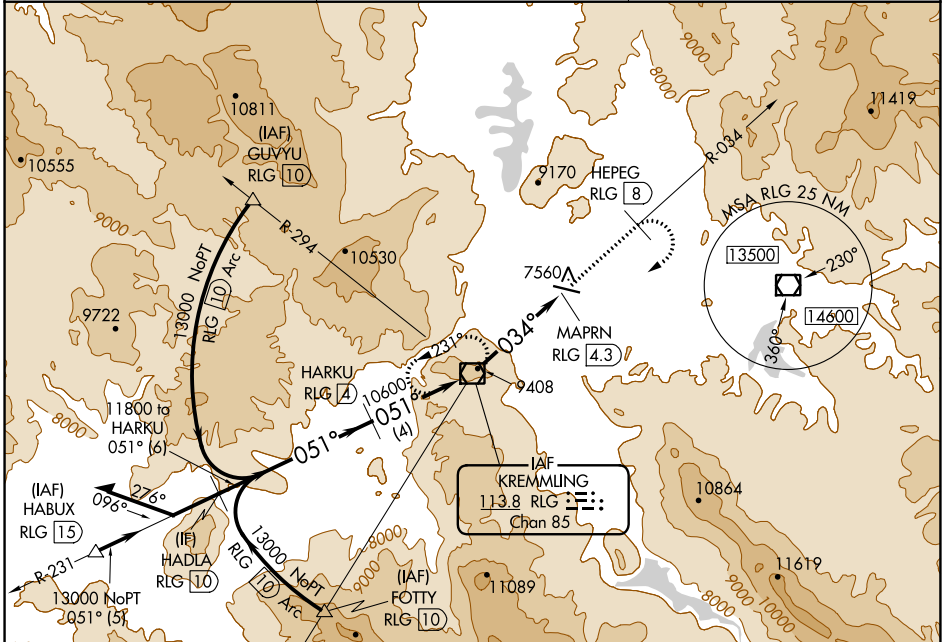
**VOR/DME-A**  
MC ELROY AIRFIELD (20V)

**V**  
**A**  
**38** -19°C

When local altimeter setting not received, procedure NA. Night Landing Rwy 9 NA. Circling NA south of Rwy 9-27.

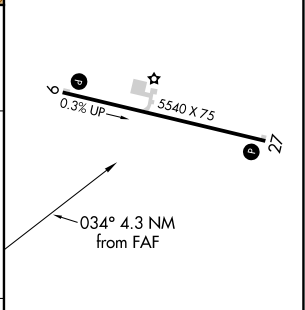
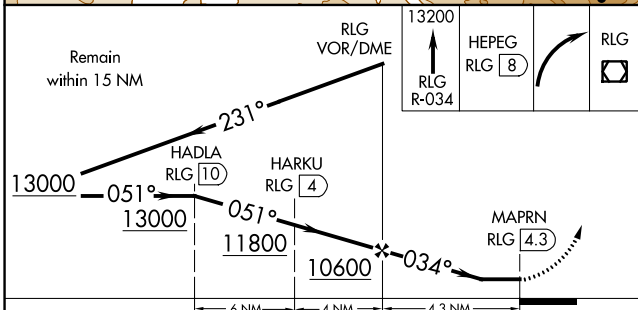
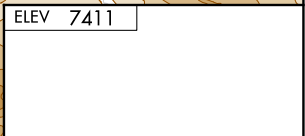
MISSED APPROACH: Climb to 13200 on RLG VOR/DME R-034 to HEPEG/RLG VOR/DME 8 DME then climbing right turn direct RLG VOR/DME and hold, continue climb-in-hold to 13200.

AWOS-3 <b>118.425</b>	DENVER CENTER <b>128.65 282.2</b>	UNICOM <b>122.8 (CTAF)</b>
--------------------------	--------------------------------------	-------------------------------



SW-1, 30 NOV 2023 to 28 DEC 2023

SW-1, 30 NOV 2023 to 28 DEC 2023



CATEGORY	A	B	C	D
<b>C</b> CIRCLING	9120-1¼ 1709 (1800-1¼)	9120-1½ 1709 (1800-1½)	9260-3 1849 (1900-3)	NA

REIL Rwys 9 and 27  
MIRL Rwy 9-27