

APP CRS	Rwy Idg	N/A
355°	TDZE	N/A
	Apt Elev	2470

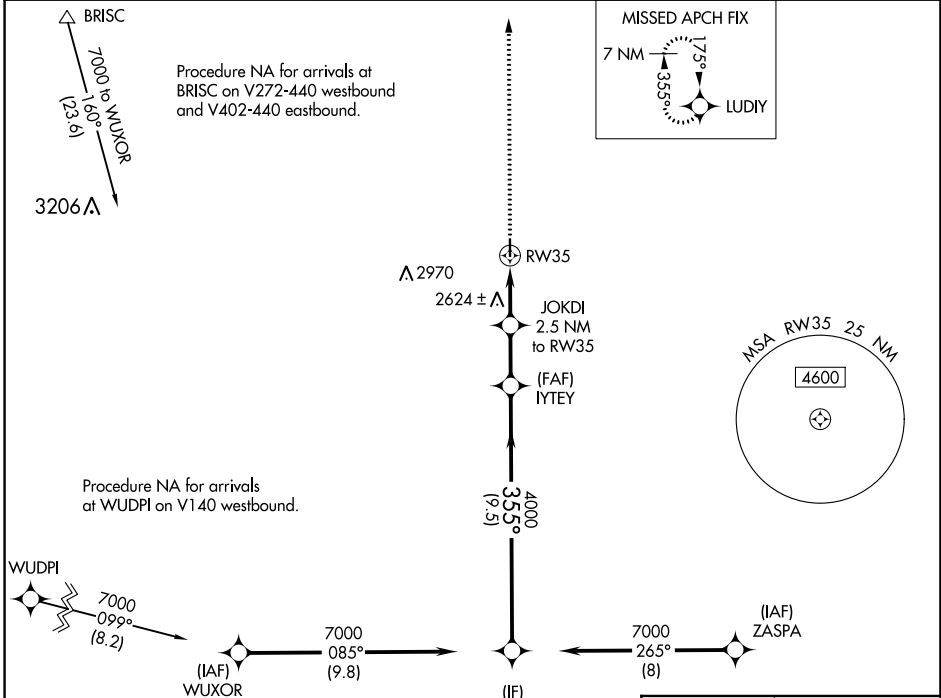
RNAV (GPS)-B

WHEELER MUNI (T59)

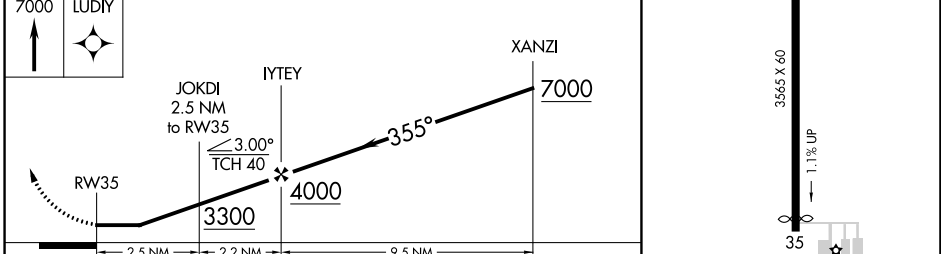
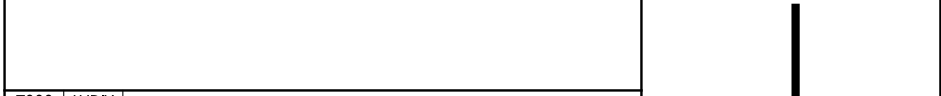
NA Helicopter visibility reduction below 3/4 SM NA. DME/DME RNP-0.3 NA. Use Hemphill County altimeter setting.

MISSED APPROACH: Climb to 7000 direct LUDIY and hold, continue climb-in-hold to 7000.

HHF AWOS-3 119.025	ALBUQUERQUE CENTER 127.85 285.475	CTAF 122.9
------------------------------	---	----------------------



ELEV	2470
------	------



CATEGORY	A	B	C	D
CIRCLING	2980-1 510 (600-1)	3000-1 530 (600-1)	3020-1½ 550 (600-1½)	NA

LURL Rwy 17-35

SC-2, 30 NOV 2023 to 28 DEC 2023

SC-2, 30 NOV 2023 to 28 DEC 2023