

WAAS CH <b>99610</b> <b>W33A</b>	APP CRS <b>326°</b>	Rwy Idg TDZE Apt Elev	<b>5001</b> <b>10</b> <b>10</b>
--	------------------------	-----------------------------	---------------------------------------

# RNAV (GPS) RWY 33

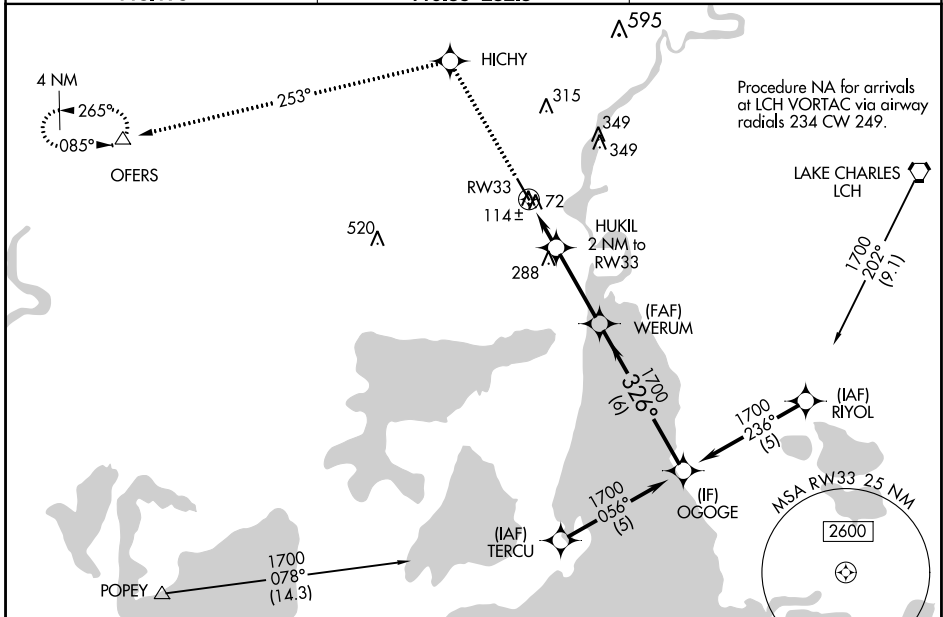
SOUTHLAND FLD (UXL)

RNP APCH-GPS

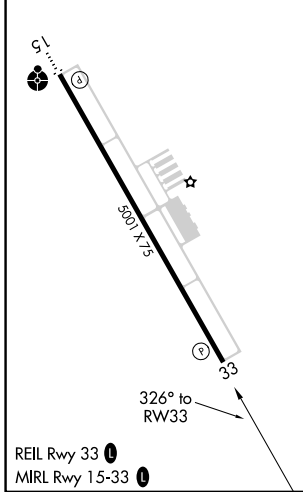
Baro-VNAV NA when using Lake Charles Rgnl altimeter setting. For uncompensated Baro-VNAV systems, LNAV/VNAV NA below -1.5°C or above 49°C. Rwy 33 helicopter visibility reduction below 3/4 SM NA. When local altimeter setting not received, use Lake Charles Rgnl altimeter setting and increase LPV DA to 367 feet; increase LNAV/VNAV DA to 403 feet and all visibilities 1/2 SM; increase all MDAs 20 feet and Circling visibility Cat C/D 1/4 SM.

MISSED APPROACH: Climb to 2500 direct HICHY and via 253° track to OFERS and hold.

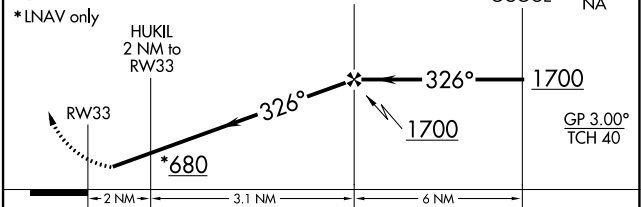
AWOS-3PT <b>118.175</b>	LAKE CHARLES APP CON ★ <b>119.35 282.3</b>	UNICOM <b>122.8 (CTAF) ①</b>
----------------------------	---	---------------------------------



ELEV 10	TDZE 10
---------	---------



2500	HICHY	tr 253°	OFERS	VGSI and RNAV glidepath not coincident (VGSI Angle 3.00/TCH 50).
------	-------	---------	-------	--



CATEGORY	A	B	C	D
LPV DA		348-1 1/4	338 (400-1 1/4)	
LNAV/VNAV DA		384-1 1/4	374 (400-1 1/4)	
LNAV MDA		380-1 370 (400-1)		380-1 1/4 370 (400-1 1/4)
CIRCLING	420-1 410 (500-1)	520-1 510 (600-1)	680-1 3/4 670 (700-1 3/4)	680-2 670 (700-2)

SC-4, 30 NOV 2023 to 28 DEC 2023

SC-4, 30 NOV 2023 to 28 DEC 2023