

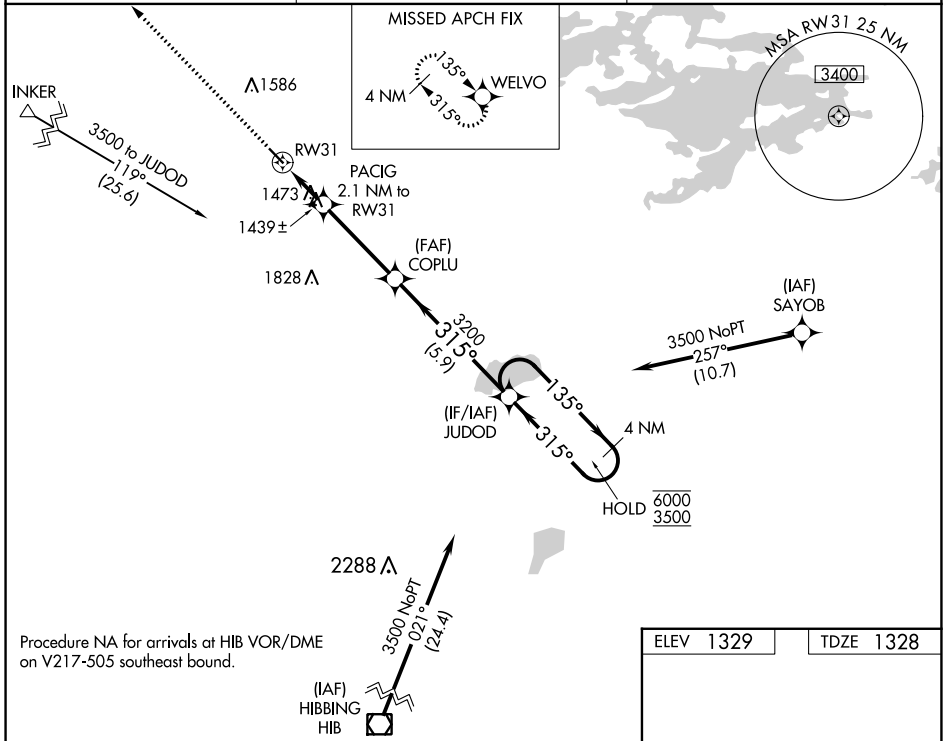
WAAS CH <b>78426</b> W31A	APP CRS <b>315°</b>	Rwy Idg TDZE Apt Elev	<b>4000</b> <b>1328</b> <b>1329</b>
---------------------------------	------------------------	-----------------------------	---

# RNAV (GPS) RWY 31

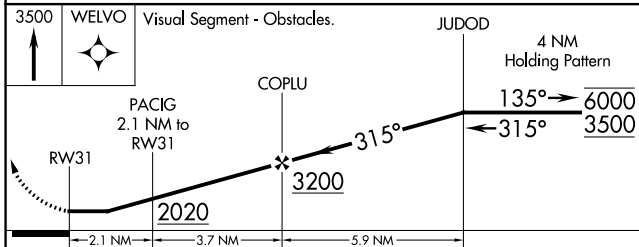
COOK MUNI (CQM)

RNP APCH.	MISSED APPROACH: Climb to 3500 direct WELVO and hold.
<p><b>⚠</b> Rwy 31 helicopter visibility reduction below <math>\frac{3}{4}</math> SM NA. When local altimeter setting not received, use Orr altimeter setting and increase all MDAs 40 feet.</p>	

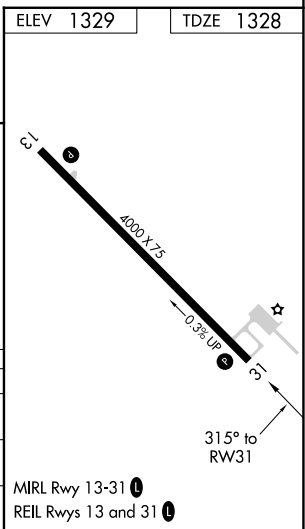
AWOS-3 <b>118.175</b>	MINNEAPOLIS CENTER <b>127.9 281.45</b>	CTAF <b>122.9 0</b>
--------------------------	---	------------------------



Procedure NA for arrivals at HIB VOR/DME on V217-505 southeast bound.



CATEGORY	A	B	C	D
LP MDA	1740-1	412 (500-1)		NA
LNAV MDA	1760-1	432 (500-1)		NA
CIRCLING	1780-1	451 (500-1)		NA



MIRL Rwy 13-31  
REIL Rwy 13 and 31

NC-1, 30 NOV 2023 to 28 DEC 2023

NC-1, 30 NOV 2023 to 28 DEC 2023