

WAAAS CH <b>62933</b> <b>W13A</b>	APP CRS <b>128°</b>	Rwy Idg <b>4102</b> TDZE <b>1376</b> Apt Elev <b>1376</b>
---	------------------------	---

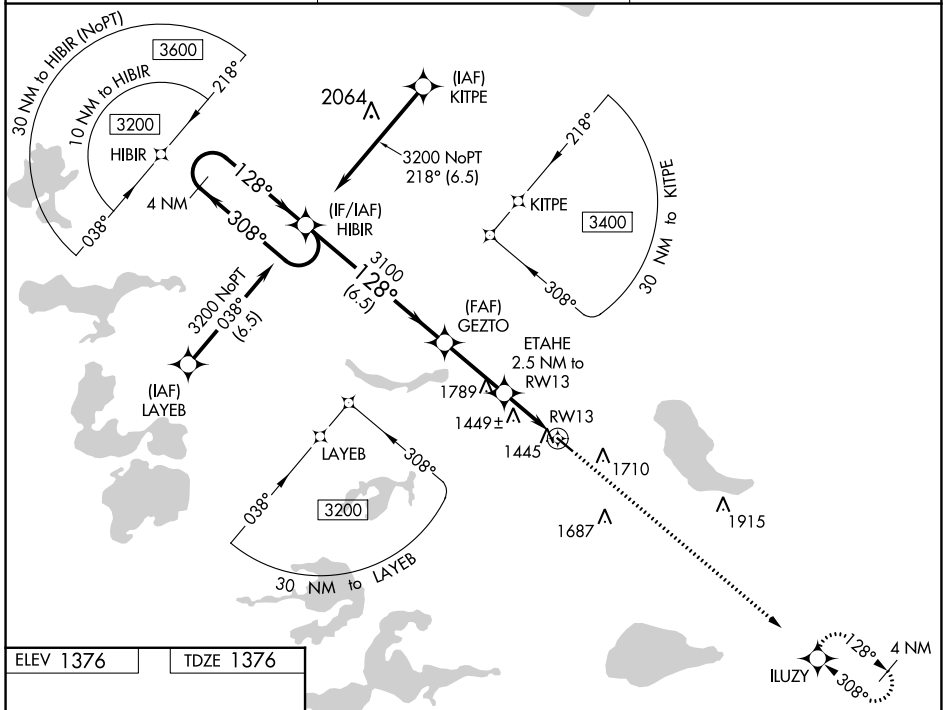
# RNAV (GPS) RWY 13

PERHAM MUNI (16D)

**NA** Baro-VNAV NA. DME/DME RNP-0.3 NA. Helicopter visibility reduction below 3/4 SM NA. Use Detroit Lakes altimeter setting; when not received, use Wadena altimeter setting.

**MISSED APPROACH:** Climb to 3000 direct ILUZY and hold.

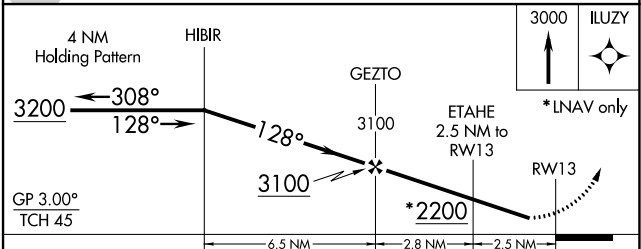
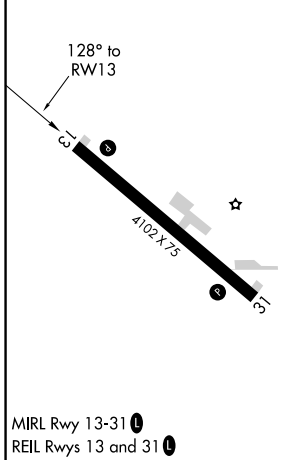
MINNEAPOLIS CENTER <b>126.1 269.2</b>	GCO <b>121.725</b>	CTAF <b>122.9</b>
--	-----------------------	----------------------



NC-1, 30 NOV 2023 to 28 DEC 2023

NC-1, 30 NOV 2023 to 28 DEC 2023

ELEV 1376	TDZE 1376
-----------	-----------



CATEGORY	A	B	C	D
LPV DA	1671-1	295 (300-1)		NA
LNAV/VNAV DA	1671-1	295 (300-1)		NA
LNAV MDA	1760-1	384 (400-1)		NA
<b>C</b> CIRCLING	2120-1	744 (800-1)		NA