

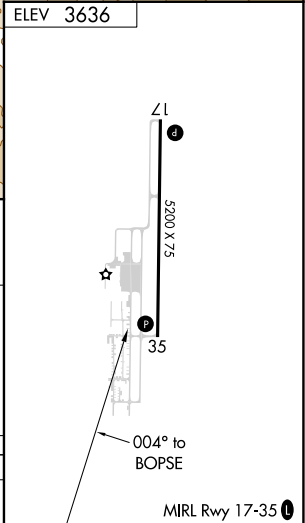
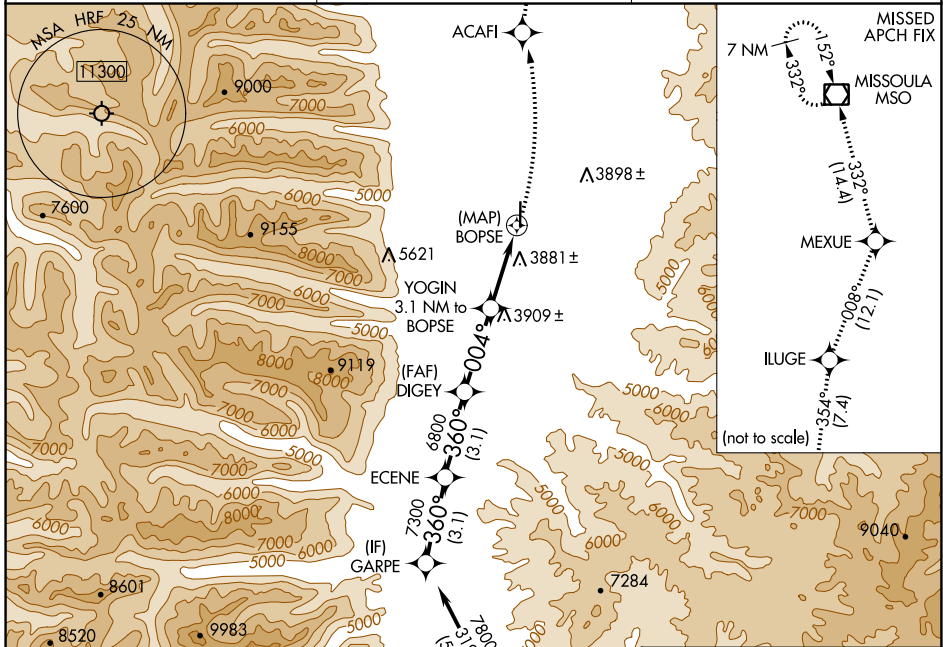
APP CRS 004°	Rwy Idg TDZE Apt Elev	N/A N/A 3636
------------------------	-----------------------------	---

RNAV (GPS)-A

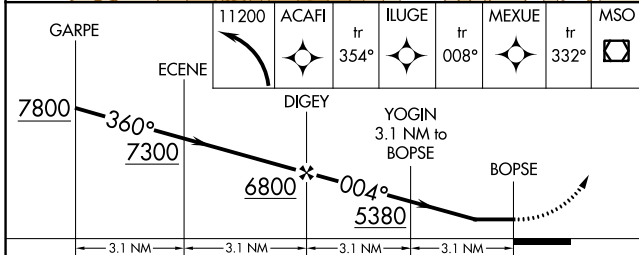
RAVALLI COUNTY (HRF)

RNP APCH-GPS.	MISSED APPROACH: Climbing left turn to 11200 direct ACAFI and on track 354° to ILUGE and track 008° to MEXUE and track 332° to MISSOULA VOR/DME and hold.
Circling to Rwy 35 NA at night. Rwy 35 helicopter visibility reduction below 1 SM NA.	

AWOS-3P 119.825	SALT LAKE CENTER 132.4 338.3	UNICOM 122.8 (CTAF)
---------------------------	--	-------------------------------



GARPE	ECENE	ACAFI	ILUGE	MEXUE	MSO
		11200	tr 354°	tr 008°	tr 332°



CATEGORY	A	B	C	D
CIRCLING	4240-1 604 (700-1)	4260-1 624 (700-1)	NA	

NW-1, 30 NOV 2023 to 28 DEC 2023

NW-1, 30 NOV 2023 to 28 DEC 2023