

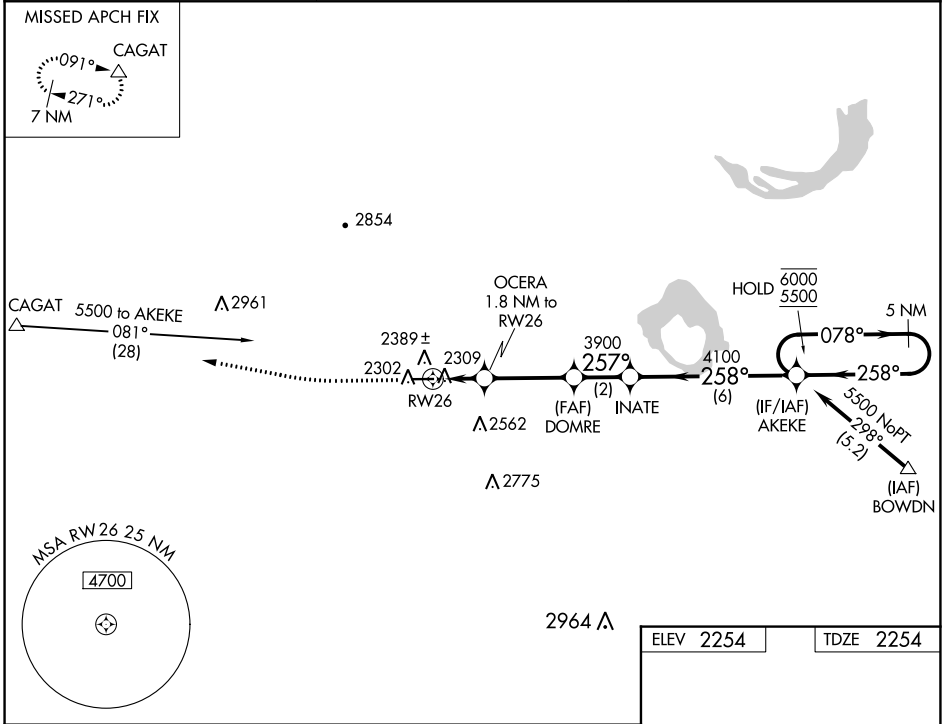
WAAS CH <b>97721</b> <b>W26A</b>	APP CRS <b>257°</b>	Rwy Idg TDZE Apt Elev	<b>4500</b> <b>2254</b> <b>2254</b>
--	------------------------	-----------------------------	---

# RNAV (GPS) RWY 26

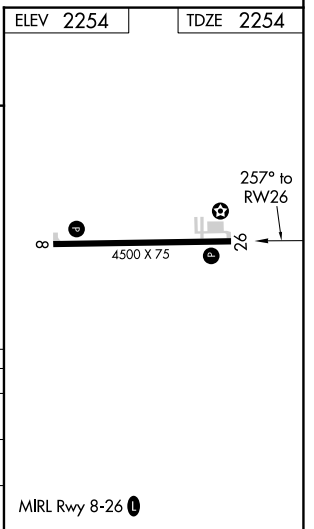
MALTA (M75)

RNP APCH. ▼	MISSED APPROACH: Climb to 2700, then climb to 6500 direct CAGAT and hold, continue climb-in-hold 6500.
----------------	--

AWOS-3 <b>119.25</b>	SALT LAKE CITY CENTER <b>126.85 305.2</b>	AUNICOM <b>122.8 (CTAF) ①</b>
-------------------------	--	----------------------------------



2700	6500	CAGAT	VGSI and descent angles not coincident (VGSI Angle 3.00/TCH 27).	
OCERA 1.8 NM to RW26		DOMRE	INATE	AKEKE 5 NM Holding Pattern
0.9 NM to RW26		2880	3900	4100
0.9 NM		0.9 NM	3.2 NM	2 NM
CATEGORY	A	B	C	D
LP MDA	2560-1	306 (400-1)		NA
LNAV MDA	2640-1	386 (400-1)		NA
① CIRCLING	2800-1 546 (600-1)	2880-1 626 (700-1)		NA



NW-1, 30 NOV 2023 to 28 DEC 2023

NW-1, 30 NOV 2023 to 28 DEC 2023