

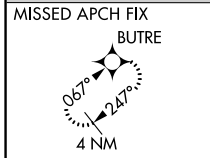
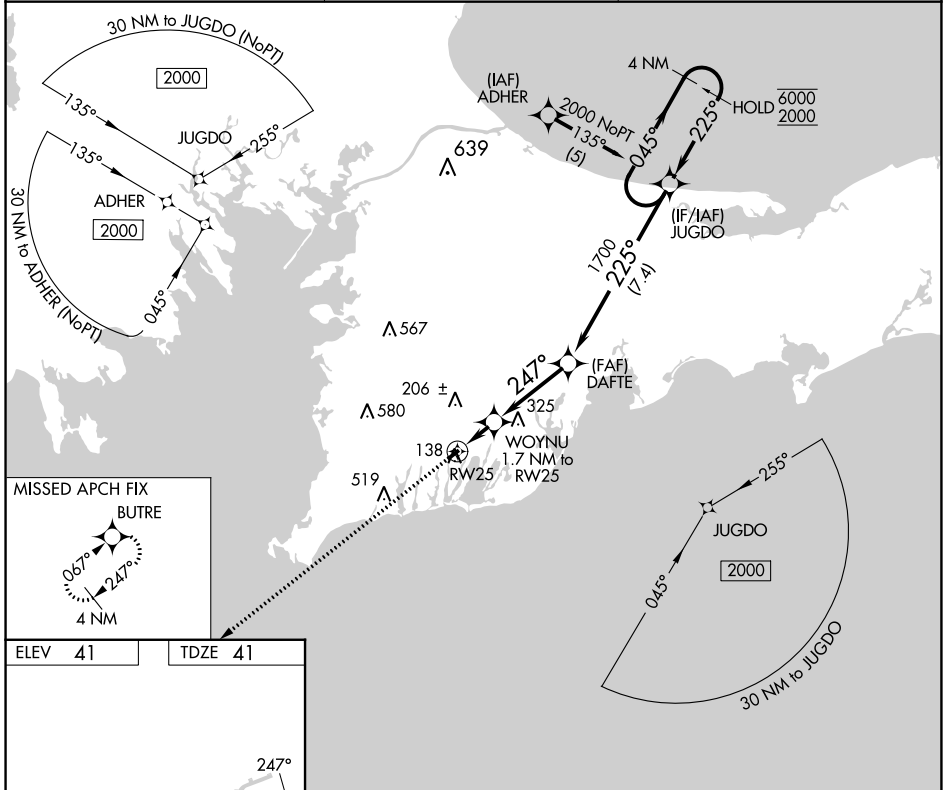
APP CRS	Rwy Idg	2298
247°	TDZE	41
	Apt Elev	41

RNAV (GPS) RWY 25

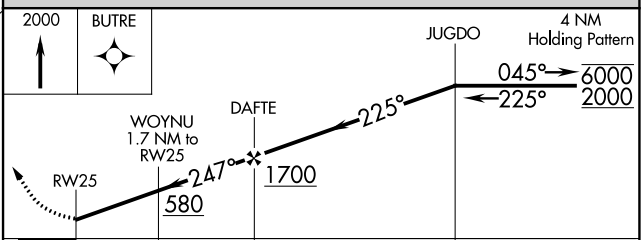
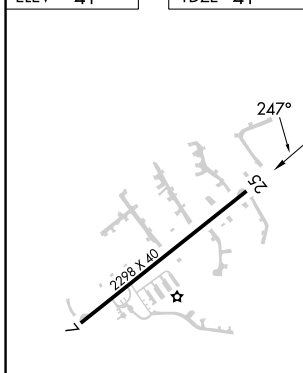
FALMOUTH AIRPARK (5B6)

RNP APCH - GPS.	MISSED APPROACH: Climb to 2000 direct BUTRE and hold.
<p>▼ Rwy 25 helicopter visibility reduction below 1 SM NA. Use Cape Cod Coast Guard Air Station altimeter setting. When not received, procedure NA. Procedure NA at night.</p> <p>▲ NA</p>	

BOSTON APP CON 118.2	UNICOM 123.075 (CTAF)	122.70
--------------------------------	---------------------------------	---------------



ELEV 41	TDZE 41
---------	---------



CATEGORY	A	B	C	D
LNAV MDA	500-1	459 (500-1)		NA
C CIRCLING	560-1	519 (600-1)		NA

LURL Rwy 7-25

NE-1, 30 NOV 2023 to 28 DEC 2023

NE-1, 30 NOV 2023 to 28 DEC 2023