

APP CRS	Rwy Idg	N/A
331°	TDZE	N/A
	Apt Elev	63

# RNAV (GPS)-A

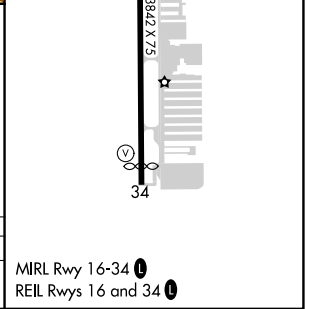
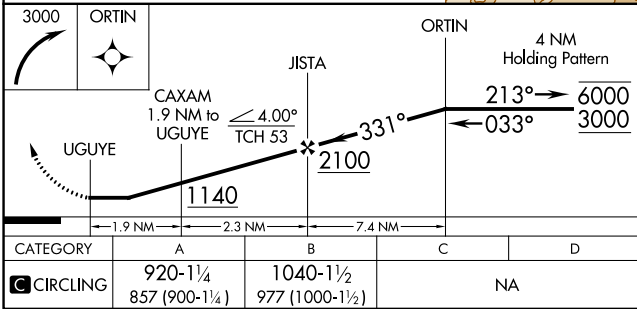
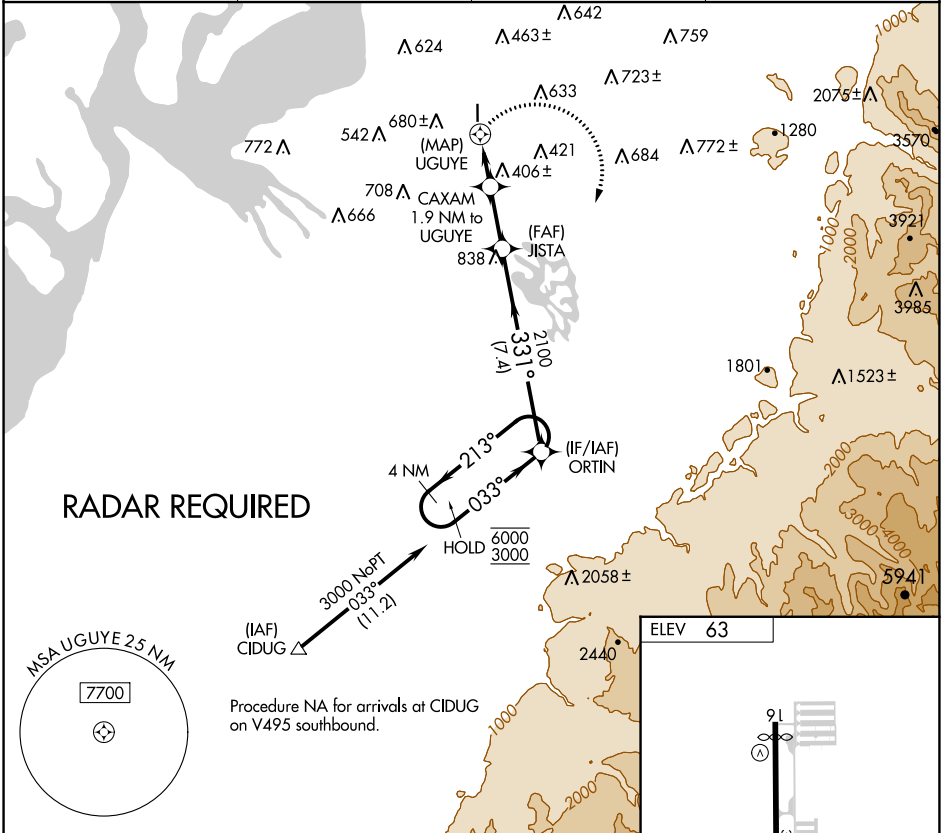
AUBURN MUNI (S5 $\emptyset$ )

RNP APCH - GPS.

**NA** Circling NA west of Rwy 16-34. Rwy 16, 34 helicopter visibility reduction below 1 SM NA. Use Seattle-Tacoma Intl altimeter setting. When Circling to Rwy 16, 34 at night, operational VGSI required, remain on or above VGSI glidepath until threshold. Procedure NA at night when VGSI inop.

MISSED APPROACH: Climbing right turn to 3000 direct ORTIN and hold.

SEA ASOS	SEATTLE APP CON	CLNC DEL	UNICOM
118.0	123.85	123.85	122.975 (CTAF) $\emptyset$



CATEGORY	A	B	C	D
<b>CIRCLING</b>	920-1¼ 857 (900-1¼)	1040-1½ 977 (1000-1½)	NA	

MIRL Rwy 16-34  $\emptyset$   
REIL Rws 16 and 34  $\emptyset$

NW-1, 30 NOV 2023 to 28 DEC 2023

NW-1, 30 NOV 2023 to 28 DEC 2023