

WAAS CH 70744 W36A	APP CRS 005°	Rwy Idg TDZE Apt Elev	4001 671 671
--	------------------------	-----------------------------	---

RNAV (GPS) RWY 36

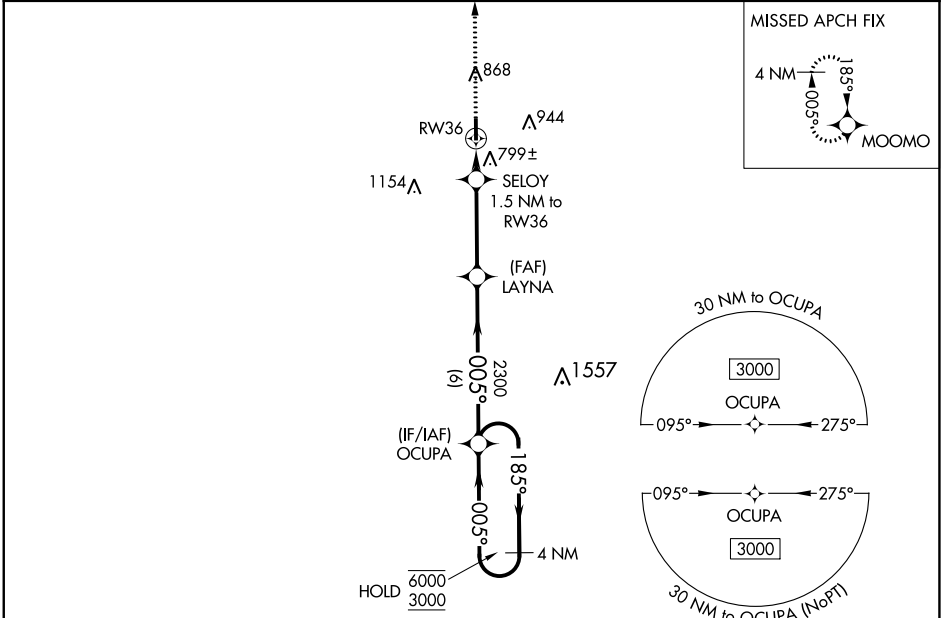
DELPHI MUNI (I19)

RNP APCH - GPS.

When Circling to Rwy 18 at night, operational VGSI required, remain on or above VGSI glidepath until threshold. Rwy 36 helicopter visibility reduction below 3/4 SM NA. Baro-VNAV NA. Use Monticello altimeter setting.

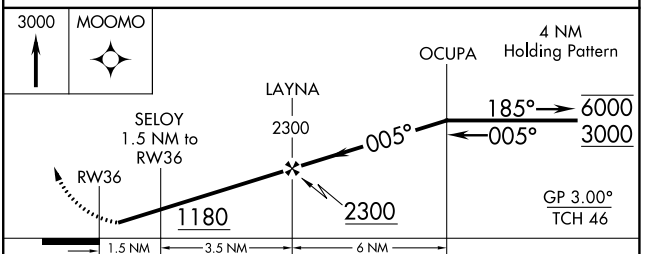
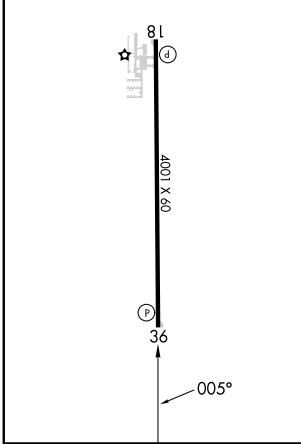
MISSED APPROACH: Climb to 3000 direct MOOMO and hold.

MCX AWOS-3P 124.05	GRISSOM APP CON* 121.05 338.275	CTAF 122.9
------------------------------	---	----------------------



ELEV 671	TDZE 671
----------	----------

MIRL Rwy 18-36
REIL Rwy 18 and 36



CATEGORY	A	B	C	D
LPV DA	948-1	277 (300-1)		NA
LNAV/VNAV DA	1089-1 1/8	418 (500-1 1/8)		NA
LNAV MDA	1080-1	409 (500-1)		NA
CIRCLING	1140-1 469 (500-1)	1220-1 549 (600-1)		NA

EC-2, 30 NOV 2023 to 28 DEC 2023

EC-2, 30 NOV 2023 to 28 DEC 2023