

CIRCLEVILLE

PICKAWAY CO MEML (CYO)(KCYO) 5 S UTC-5(-4DT) N39°30.96' W82°58.93'

CINCINNATI

685 B NOTAM FILE DAY

L-29A

RWY 01-19: H4346X75 (ASPH) S-30, D-40 MIRL 0.5% up N

IAP

RWY 01: Trees.

RWY 19: REIL. PAPI(P4R)—GA 3.0° TCH 24'.

SERVICE: FUEL 100LL, JET A LGT ACTIVATE REIL Rwy 19; PAPI Rwy 19; MIRL—CTAF.

AIRPORT REMARKS: Unatndd. Fuel: 100LL and Jet A avbl H24 via credit card.

AIRPORT MANAGER: 740-474-5145

COMMUNICATIONS: CTAF/UNICOM 122.7

Ⓡ COLUMBUS APP/DEP CON 134.0

CLEARANCE DELIVERY PHONE: For CD ctc Columbus Apch at 614-338-8537.

RADIO AIDS TO NAVIGATION: NOTAM FILE DAY.

APPLETON (VH) (H) VORTAC 116.7 APE Chan 114 N40°09.06' W82°35.30' 212° 42.2 NM to fld. 1354/6W.

VOR unusable:

025°-030°

TACAN AZIMUTH unusable:

075°-095°

110°-115°

DME unusable:

075°-080°

YELLOW BUD (T) VORW 112.5 XUB N39°31.61' W82°58.68' at fld. 689/5W.

CLERMONT CO (See BATAVIA on page 263)

CLEVELAND

BURKE LAKEFRONT (BKL)(KBKL) 1 N UTC-5(-4DT) N41°31.07' W81°40.96'

DETROIT

584 B ARFF Index—See Remarks NOTAM FILE BKL

H-10G, L-30G

RWY 06L-24R: H6604X150 (ASPH-GRVD) S-93, D-113, 2S-144, 2D-170 PCN 84 F/C/X/T HIRL

IAP, AD

RWY 06L: REIL. PAPI(P4R)—GA 3.0° TCH 45'. Thld dspclcd 178'.

RWY 24R: MALS F. PAPI(P4R)—GA 3.0° TCH 42'. Thld dspclcd 600'.

Bldg. Rgt tfc.

RWY 06R-24L: H5197X100 (ASPH-GRVD) S-43, D-50, 2D-82

PCN 63 F/C/X/T HIRL

RWY 06R: Thld dspclcd 275'.

RWY 24L: REIL. Antenna. Rgt tfc.

RUNWAY DECLARED DISTANCE INFORMATION

RWY 06L:TORA-6503 TODA-6503 ASDA-6503 LDA-6325

RWY 06R:TORA-5199 TODA-5199 ASDA-5199 LDA-4924

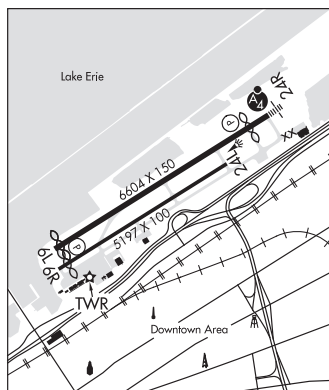
RWY 24L:TORA-5199 TODA-5199 ASDA-5199 LDA-5199

RWY 24R:TORA-6603 TODA-6603 ASDA-6603 LDA-6003

ARRESTING GEAR/SYSTEM

RWY 24R: EMAS

SERVICE: S4 FUEL 100LL, JET A OX 1, 2 LGT When ATCT clsd acctv MALS F Rwy 24R; REIL Rwy 06L—CTAF. HIRL Rwy 06L-24R preset med intst, to incr intst RDO req on UNICOM. PAPI Rwy 06L and 24R opr consly. Rwy 06L unusable byd 5° right of centerline. PAPI Rwy 24R unusable byd 8° left of course.



AIRPORT REMARKS: Attended continuously. Birds and waterfowl on and invof airport. 72' ship crane 1300' southwest of Rwy 06R. Class IV ARFF Index A. Clsd to skedd acr ops gtr than 9 pax seats. PPR for unsked acr ops with more than 30 pax seats call amgr. Rwy 06R-24L clsd to unsked acr ops gtr than 30 pax seats; clsd when ATCT clsd. Rwy 06L-24R and Rwy 06R-24L apch surfaces have navigable waterways creating possible vessel obstruction areas—check local NOTAMS for current activity; vessel height; etc. Ldg fee. Fee schedule based on number of engines and gross weight. Flight Notification Service (ADCUS) avbl 24 hrs Mon-Fri reg for svc on Sat; Sun and holidays must be made prior to 2130Z† on Fri; 2 hrs advance notice req call 216-267-3600. Private acct and general aviation only.

AIRPORT MANAGER: 216-781-6411

WEATHER DATA SOURCES: ASOS (216) 241-6904 LAWRS.

COMMUNICATIONS: CTAF 124.3 ATIS 125.25 UNICOM 122.95

Ⓡ CLEVELAND APP/DEP CON 125.35

TOWER 124.3 (1200Z† Mon to 0400Z† Fri, 1200-0400Z† Sat, 1300-0500Z† Sun) **GND CON** 121.9

CLNC DEL 121.9 (When twr clsd)

CLEARANCE DELIVERY PHONE: For CD when ATCT clsd ctc Cleveland Apch at 216-352-2323.

CONTINUED ON NEXT PAGE

CONTINUED FROM PRECEDING PAGE

AIRSPACE: CLASS D svc 1200Z± Mon to 0400Z± Fri, 1200-0400Z± Sat, 1300-0500Z± Sun; other times CLASS G.

RADIO AIDS TO NAVIGATION: NOTAM FILE CLF.

CHARDON (H) (DH) VORW/DME 112.7 CXR Chan 74 N41°31.02' W81°09.79' 275° 23.4 NM to fld. 1317/5W.

VOR unusable:

074°-084° byd 10 NM blo 3,300'
085°-099° byd 10 NM blo 11,000'
104°-180° byd 10 NM blo 6,000'
357°-073° byd 10 NM blo 11,000'

DME unusable:

019°-029° byd 34 NM blo 3,700'
158°-174° blo 5,500'
253°-274° blo 4,100'

ILS/DME 109.75 I-BFT Chan 34(Y) Rwy 24R. Class IE. DME unusable byd 30° right of course.

COMM/NAV/WEATHER REMARKS: Emerg frequency 121.5 not available at twr.

CLEVELAND-HOPKINS INTL (CLE)(KCLE) 9 SW UTC-5(-4DT) N41°24.56' W81°51.28'

DETROIT

800 B AOE Class I, ARFF Index C NOTAM FILE CLF

H-10G, L-30G

RWY 06R-24L: H9953X150 (CONC-GRVD) S-100, D-185, 2S-175,

2D-340 PCN 63 R/B/W/T HIRL CL

IAP, AD

RWY 06R: MALSR. TDZL. PAPI(P4L)—GA 3.0° TCH 73'. RVR-TMR Thld splcd 1923'. Trees.

RWY 24L: MALSR. TDZL. PAPI(P4R)—GA 3.0° TCH 48'. RVR-TMR

RWY 06L-24R: H9000X150 (CONC-GRVD) S-75, D-200, 2S-175, 2D-400 PCN 78 R/B/W/T HIRL CL

RWY 06L: ALSF2. TDZL. PAPI(P4L)—GA 3.0° TCH 69'. RVR-TMR Trees.

RWY 24R: ALSF2. TDZL. PAPI(P4R)—GA 3.0° TCH 65'. RVR-TMR

RWY 10-28: H6018X150 (ASPH-CONC-GRVD) S-155, D-200, 2S-175, 2D-400 PCN 80 R/B/W/T HIRL 0.5% up E

RWY 10: REIL. PAPI(P4L)—GA 3.0° TCH 45'. RVR-R Tree.

RWY 28: MALSF. PAPI(P4R)—GA 3.0° TCH 45'. RVR-T Pole.

RUNWAY DECLARED DISTANCE INFORMATION

RWY 06L:TORA-9000 TODA-9000 ASDA-9000 LDA-9000

RWY 06R:TORA-9956 TODA-9956 ASDA-9956 LDA-8029

RWY 10: TORA-6018 TODA-6018 ASDA-6018 LDA-6018

RWY 24L:TORA-9956 TODA-9956 ASDA-9956 LDA-9956

RWY 24R:TORA-9000 TODA-9000 ASDA-9000 LDA-9000

RWY 28: TORA-6018 TODA-6018 ASDA-6018 LDA-6018

ARRESTING GEAR/SYSTEM

RWY 10: EMAS

RWY 28: EMAS

SERVICE: S4 FUEL 100LL, JET A1+ OX 1, 2, 3, 4 LGT PAPI unusbl byd 8° L&R of cntrln.

NOISE: All apchs are ovr noise sensitive areas. Arpt late ngt noise abatement procedures are in effect 0400-1100Z±.

Additional noise abatement procedures are in effect call amgr normal business hrs at 216-265-6090.

AIRPORT REMARKS: Attended continuously. Deer, coyotes, & birds inclg waterfowl on & invof arpt. ASSC in use. Operate transponders with altitude reporting mode and ADS-B (if equipped) enabled on all airport surfaces. Twys clsd Oct-Apr to support deicing ops: Twy M; Twy J2; Twy M1 btn Twy L & Twy J1; Twy M2 btn Twy L & Twy J1. Txl H clsd to acft with wingspan ovr 171 ft. Pad 2 and Taxilane Y1 rstd to Group II acft, less than 79' wingspan. Ramp area concourse D between gates D1, D28 clsd except acft wingspan less than 86'. Pad 3 bays 1-5 clsd to acft with wingspan ovr 134'. Pad 3 bay 6 clsd to acft with wingspan over 94'. Twy F clsd to acft with wingspan over 118'. NASA Glenn Research Center; NASA ramp PPR call 216-433-2031; Mon-Fri 1300-2230Z±. Contact NASA ops on freq 122.925 within 50 NM. Ldg Fee. ADCUS avbl dly 1200-0000Z±, ltd avblty durg off hrs; all reqs for svc must be made with US Cust Svc ofc lctd at gate A-14 call 216-267-3600 durg listed hrs.

AIRPORT MANAGER: 216-265-6963

WEATHER DATA SOURCES: ASOS (216) 416-2729 TDWR.

COMMUNICATIONS: D-ATIS ARR 127.85 D-ATIS DEP 132.375 UNICOM 122.95

RCO 122.3 (CLEVELAND RADIO)

Ⓡ APP CON 126.55

Ⓡ DEP CON 128.25 135.875

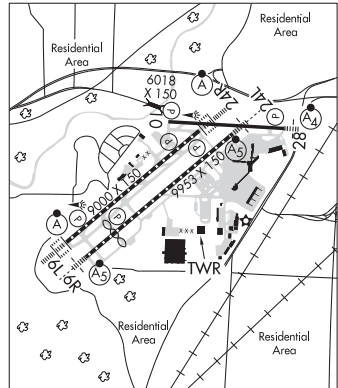
TOWER 124.5

GND CON 121.7 CLNC DEL 125.05

CPDLC (LOGON KUSA)

PDC

AIRSPACE: CLASS B See VFR Terminal Area Chart.



CONTINUED ON NEXT PAGE