

**BOISE AIR TRML/GOWEN FLD** (BOI)(KBOI) P (ANG ARNG) 3 S UTC-7(-6DT) N43°33.86'

**SALT LAKE CITY**

W116°13.37'

**H-1C, 3C, L-11B**

2872 B LRA Class I, ARFF Index C NOTAM FILE BOI

**IAP, AD**

**RWY 10L-28R:** H10000X150 (ASPH-GRVD) S-100, D-210, 2S-175, 2D-446, 2D/2D2-947 PCN 105F/C/W/T HIRL

**RWY 10L:** REIL PAPI(P4R)—GA 3.0° TCH 53'. Antenna. 0.5% up.

**RWY 28R:** PAPI(P4L)—GA 3.0° TCH 70'. Rgt tfc. 0.3% down.

**RWY 10R-28L:** H9763X150 (ASPH-GRVD) S-100, D-210, 2S-175, 2D-430, 2D/2D2-994 PCN 76 F/B/W/T HIRL CL

**RWY 10R:** ALSF2. TDZL. VASI(V4L)—GA 3.0° TCH 64'. RVR-TMR Rgt tfc. 0.5% up.

**RWY 28L:** MALSR. TDZL. VASI(V4L)—GA 3.0° TCH 50'. RVR-TMR

**RUNWAY DECLARED DISTANCE INFORMATION**

**RWY 10L:**TORA-10000 TODA-10000 ASDA-10000 LDA-10000

**RWY 10R:**TORA-9763 TODA-9763 ASDA-9763 LDA-9763

**RWY 28L:**TORA-9763 TODA-9763 ASDA-9763 LDA-9763

**RWY 28R:**TORA-10000 TODA-10000 ASDA-10000 LDA-10000

**SERVICE:** S4 **FUEL** 100LL, JET A+ **OX** 1, 2, 3, 4 **LGT** Arpt lgt sched dusk to dawn. **MILITARY—JASU** 1(MC-1M) 6(AM32A-60)

4(A/M32A-86) **FUEL** A++ (Mil), A, A+ (1300-0600Z†Mon-Fri;

1300-0300Z† Sat-Sun and hol, call C208-338-1833, 25 min PN rqr, \$90 fee.) (NC-100LL) **FLUID** PRESAIR OIL O-133-148(Mil) SOAP

**AIRPORT REMARKS:** Attended continuously. Extv helicopter ops sfc to 3500' within 1 NM east and west and 5 NM south of Rwy 10R-28L. Moderate migratory bird activity within 5 NM of the arpt Oct-Mar. Security rgrs PPR with FBO due to locked gates and fencing btn hrs 0500-1400Z† for ingress/egress to arpt. Aerodrome offl bus only for all mil acft.

Mandatory PPR required for all mil acft arr at KBOI—regardless of where acft is parking—prior to arr, nlt 72 hr if parking on ANG ramp at <http://www.124thfighterwing.ang.af.mil/>. Strictly enforced. PPR valid +/- 30 min. Tran acft rstd to str-in full stop only. In event of go-around or missed-apch exp rt tfc. The arpt req flight crews parking on the coml ramp ctc gnd ctl on 121.7 MHz prior to pushback. All twys clsd to acft with wingspan over 170 ft except 1 hr PPR 208-972-8420.

Twy J north of Twy F clsd to acft with wingspan over 94 ft when west arm/dearm pad in use. Twy B clsd btn Twy F and Twy C to acft with wingspan over 147 ft 1 in except 1 hr PPR 208-972-8420. Twy B clsd btn Twy C and Twy B1 to acft with wingspan over 118 ft when east arm/dearm pad in use. Twy S and Txl S clsd to acft over 170 ft wingspan btn Twy B and southeast cargo. Txl S clsd to acft over 100 ft wingspan east of southeast cargo. Txl A5 clsd to acft with wingspan over 55 ft. Twy A5 clsd to acft with wingspan ovr 55 ft, exc with 24 hr PPR (208-972-8420). Portions of Twy K and the southwest ramp not visible to twr. Flight Notification Service (ADCUS) avbl Mon-Fri 1500-0000Z†, weekends if notified by Thur 0000Z†. NOTE: See Special Notices—Arrival Alert.

**AIRPORT MANAGER:** (208) 972-8420

**WEATHER DATA SOURCES:** ASOS (208) 388-4640

**COMMUNICATIONS:** D-ATIS 123.9 UNICOM 122.95

**RCO** 122.6 (BOISE RADIO)

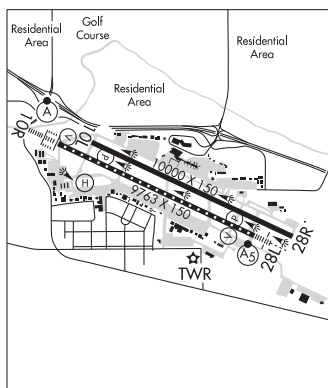
Ⓡ **BIG SKY APP/DEP CON** 119.6 (More than 15NM from BOI) 126.9 (Within 15NM of BOI)

**TOWER** 118.1 119.0 **GND CON** 121.7 **CLNC DEL** 125.9

**PDC**

**AIRSPACE:** CLASS C svc ctc **APP CON.**

**VOR TEST FACILITY (VOT)** 116.7



**CONTINUED ON NEXT PAGE**

## CONTINUED FROM PRECEDING PAGE

## RADIO AIDS TO NAVIGATION: NOTAM FILE BOI.

(VH) (H) VORTACW 113.3 BOI Chan 80 N43°33.17' W116°11.53' 280° 1.5 NM to fld. 2877/17E.

## VOR unusable:

001°-044° byd 22 NM blo 11,000'  
 001°-044° byd 32 NM blo 14,500'  
 023°-033° byd 40 NM blo 15,500'  
 023°-033° byd 50 NM blo 18,000'  
 034°-081° byd 40 NM  
 045°-071° byd 32 NM blo 12,500'  
 072°-084° byd 32 NM blo 10,500'  
 082°-092° byd 40 NM blo 11,500'  
 082°-092° byd 53 NM blo 14,000'  
 082°-092° byd 71 NM blo 18,000'  
 093°-107° byd 40 NM  
 108°-118° byd 40 NM blo 9,500'  
 108°-118° byd 56 NM  
 119°-210° byd 40 NM  
 211°-221° byd 40 NM blo 9,400'  
 211°-221° byd 52 NM  
 222°-233° byd 40 NM  
 273°-283° byd 40 NM blo 6,000'  
 273°-283° byd 69 NM blo 9,000'  
 273°-283° byd 88 NM  
 284°-295° byd 40 NM

## TACAN AZIMUTH unusable:

010°-060° byd 12 NM blo 13,000'  
 010°-060° byd 27 NM blo 15,500'  
 113°-155° byd 30 NM blo 7,000'  
 348°-010° byd 20 NM blo 13,000'  
 348°-010° byd 27 NM blo 15,500'

## DME unusable:

010°-060° byd 12 NM blo 13,000'  
 010°-060° byd 27 NM blo 15,500'  
 113°-155° byd 30 NM blo 7,000'  
 348°-010° byd 20 NM blo 13,000'  
 348°-010° byd 27 NM blo 15,500'

## VOR unusable:

296°-309° byd 40 NM blo 5,500'  
 296°-309° byd 46 NM blo 9,000'  
 296°-309° byd 84 NM blo 18,000'  
 315°-022° byd 40 NM

ILS/DME 111.1 I-BOI Chan 48 Rwy 10R. Class IIIE. DME unusable byd 33° right of LOC course.

ILS/DME 110.15 I-AAD Chan 38(Y) Rwy 28R. Class IE. DME unusable byd 12 NM blo 6,000'. Glideslope unusable byd 06 NM blo 4,700'. LOC unusable byd 12 NM blo 6,000'.