

GAINESVILLE MUNI (GLE)(KGLE) 3 W UTC-6(-5DT) N33°39.13' W97°11.84'

DALLAS—FT WORTH

846 B NOTAM FILE GLE

H-6H, L-17C, A

RWY 18-36: H6000X100 (ASPH) S-30, D-50 MIRL 0.9% up N

RWY 18: REIL. PAPI(P2R)—GA 3.0° TCH 45'. P-line.

RWY 36: REIL. PAPI(P2L)—GA 3.0° TCH 45'.

RWY 13-31: H4307X75 (ASPH) S-15 0.8% up NW

RWY 13: Trees.

SERVICE: S4 **FUEL** 100LL, JET A+ **LGT** Dusk-Dawn. MIRL Rwy 18-36 preset low intst; to incr intst ACTVT—CTAF. PAPI Rwys 18 and 36 opr consly.

AIRPORT REMARKS: Attended 1400-2300Z†. 100LL self-serve and full serve. Rwy 13 has aim points. Rwy 31 has aim points. Rwy 13-31 markings faded. Hel skid ldg prohibited on all paved sfcs.

AIRPORT MANAGER: 940-668-4565

WEATHER DATA SOURCES: AWOS-3 118.375 (940) 612-3549.

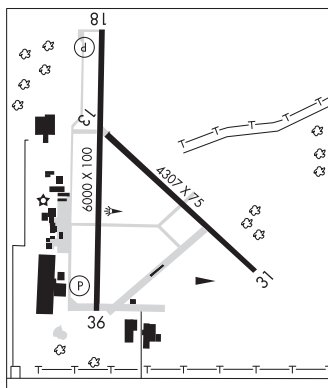
COMMUNICATIONS: CTAF/UNICOM 123.0

Ⓡ **FORT WORTH CENTER APP/DEP CON** 124.75

CLEARANCE DELIVERY PHONE: For CD ctc Fort Worth ARTCC at 817-858-7584.

RADIO AIDS TO NAVIGATION: NOTAM FILE FTW.

BOWIE (H) (H) VORTACW 117.15 UKW Chan 118(Y) N33°32.15' W97°49.28' 071° 32.0 NM to fld. 1102/6E.



GALVESTON

SCHOLES INTL AT GALVESTON (GLS)(KGLS) 3 SW UTC-6(-5DT) N29°15.92'

HOUSTON

W94°51.63'

6 B LRA NOTAM FILE GLS MON Airport

COPTER

RWY 18-36: H6001X150 (CONC) S-74, D-92, 2D-162 MIRL

H-7C, L-19E, 21A, GOMW

RWY 18: REIL. PAPI(P4L)—GA 3.0° TCH 44'.

RWY 36: REIL. PAPI(P4L)—GA 3.0° TCH 45'. Bldg.

RWY 14-32: H6000X150 (ASPH-CONC) S-90, D-115, 2D-192 HIRL

RWY 14: MALSR. PAPI(P4L)—GA 3.0° TCH 52'.

RWY 32: REIL. PAPI(P4L)—GA 3.0° TCH 46'. Bldg.

RUNWAY DECLARED DISTANCE INFORMATION

RWY 14: TORA-6000 TODA-6000 ASDA-6000 LDA-6000

RWY 18: TORA-6001 TODA-6001 ASDA-6001 LDA-6001

RWY 32: TORA-6000 TODA-6000 ASDA-6000 LDA-6000

RWY 36: TORA-6001 TODA-6001 ASDA-6001 LDA-6001

SERVICE: S4 **FUEL** 100LL, JET A **LGT** HIRL Rwy 14-32, MIRL Rwy 18-36 preset med intst. When ATCT clsd ACTVT MALSR Rwy 14—CTAF.

AIRPORT REMARKS: Attended 1200-0200Z†. Flocks of birds invof arpt blw 200 ft AGL. Hcls oprg on and invof arpt. 100LL aft hrs svc 409-750-0195. 178 ft lgtd bldg 2000 ft NE of Rwy 18 thr. PAEW adj rwys and twys. Rwy 14-32 first 1,300' NW end is conc. Flight Notification Service (ADCUS) available.

AIRPORT MANAGER: 409-797-3590

WEATHER DATA SOURCES: ASOS 123.950 (409) 740-5483.

COMMUNICATIONS: CTAF 120.575 UNICOM 123.05

GALVESTON RCO 122.2 (MONTGOMERY COUNTY RADIO)

Ⓡ **HOUSTON APP/DEP CON** 134.45

TOWER 120.575 (1200-0000Z†) **GND CON** 118.625 **CLNC DEL** 135.35

CLEARANCE DELIVERY PHONE: For CD when ATCT is clsd ctc Houston Apch at 281-443-5844 to cnl IFR at 281-443-5888.

AIRSPACE: CLASS D svc 1200-0000Z†, other times CLASS E.

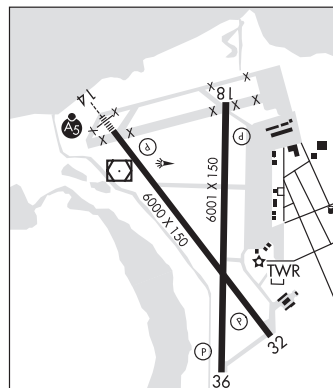
RADIO AIDS TO NAVIGATION: NOTAM FILE GLS.

(VH) (DH) **VORW/DME** 113.0 VUH Chan 77 N29°16.16' W94°52.06' at fld. 4/6E.

VOR unusable:

285°-295° byd 35 NM blo 2,500'

ILS 111.7 I-GLS Rwy 14.



GALVESTON 209B GVV N29°07.82' W94°32.79' /121

HOUSTON, HOUSTON TAC

AWOS-3 118.25 (832) 917-1465

L-19E, L-21A, GOMW

GARDEN BANKS 668 GUL N27°18.23' W93°32.30'

AWOS-3 119.025 Winds unreliable.

L-21B, GOMW