

LOC/DME I-LSQ	APP CRS	Rwy Idg	22L	22R
108.7	219°	TDZE	8207	9560
Chan 24		Apt Elev	11	10
			17	17

ILS or LOC RWY 22L

NEWARK LIBERTY INTL (EWR)

RNP APCH - GPS.

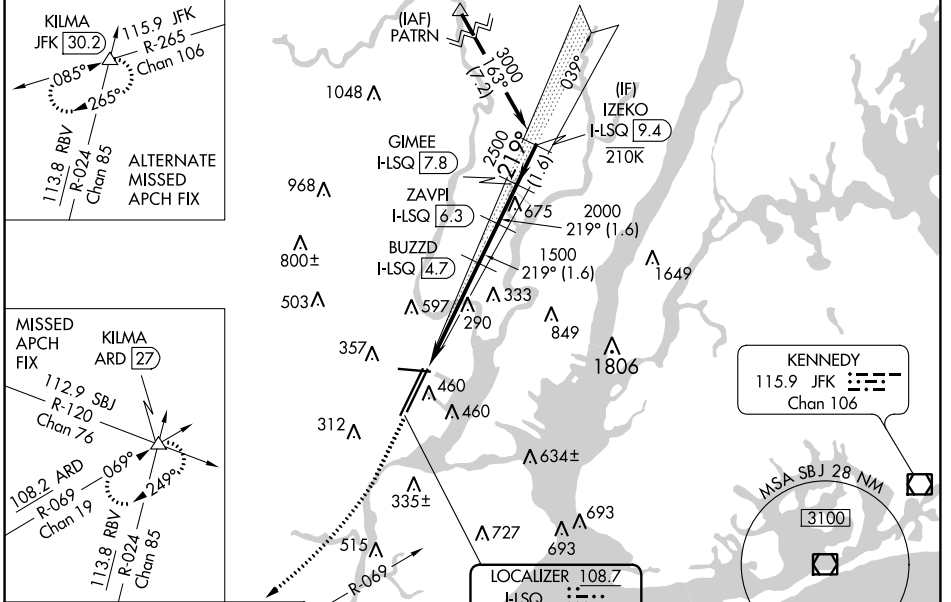
Aircraft not GPS equipped - RADAR required for procedure entry. DME required.

22L ALSF-2

22R MALSR

MISSED APPROACH: Climb to 500 then climbing right turn to 3000 on heading 225° and ARD VOR/DME R-069 to KILMA INT/ARD 27 DME and hold.

D-ATIS	NEW YORK APP CON	NEWARK TOWER	GND CON	CLNC DEL	CPDLC
115.7 134.825	128.55 379.9	118.3 257.6	121.8	118.85	



ELEV 17

TDZE 22L 11

TDZE 22R 10

219°

500

3000

ARD R-069

KILMA

VGSI and ILS glidepath not coincident (VGSI Angle 3.00/TCH 60).

BUZZD I-LSQ 4.7

ZAVPI I-LSQ 6.3

GIMEE I-LSQ 7.8

IZEKO I-LSQ 9.4

1500

2000

2500

3000

GS 3.00° TCH 43

1.5 NM 3.1 NM 1.6 NM 1.6 NM 1.6 NM

CATEGORY	A	B	C	D
S-ILS 22L	211/18 200 (200-1/2)			
S-LOC 22L	540/24	529 (600-1/2)	540/55	529 (600-1)
SIDESTEP RWY 22R	540/55 530 (600-1)			540-1/2 530 (600-1/2)
CIRCLING	660-1	643 (700-1)	900-2 3/4 883 (900-2 3/4)	900-3 883 (900-3)

TDZ/CL Rwy 4L, 4R, 11, 22L, 22R, and 29

REIL Rwy 11, 22R, and 29

HIRL Rwy 4L-22R, 4R-22L, and 11-29