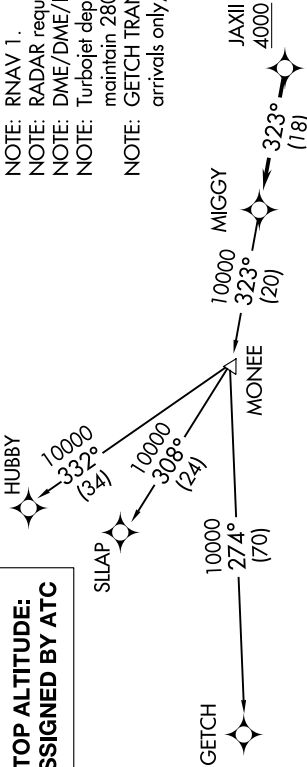


**TOP ALTITUDE:  
ASSIGNED BY ATC**

AWOS-3  
119.675  
CTAF  
123.0  
DETROIT DEP CON  
134.3 284.0

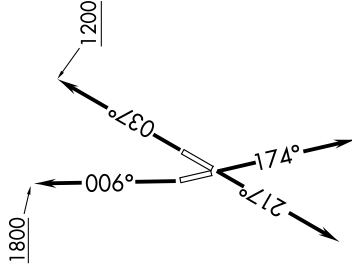
- NOTE: RNAV 1.
- NOTE: RADAR required.
- NOTE: DME/DME/IRU or GPS required.
- NOTE: Turbojet departures at/above 10000, maintain 280K until advised by ATC.
- NOTE: GETCH TRANSITION: For use by KMKE area arrivals only, or as assigned by ATC.



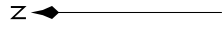
**DEPARTURE ROUTE DESCRIPTION**

- TAKEOFF RUNWAY 4:** Climb on heading 037° to 1200 then as assigned for RADAR vectors to cross JAXII at or above 4000, thence....
- TAKEOFF RUNWAY 17:** Climb on heading 174° or as assigned for RADAR vectors to cross JAXII at or above 4000, thence....
- TAKEOFF RUNWAY 22:** Climb on heading 217° or as assigned for RADAR vectors to cross JAXII at or above 4000, thence....
- TAKEOFF RUNWAY 35:** Climb on heading 006° to 1800 then as assigned for RADAR vectors to cross JAXII at or above 4000, thence....
- ....on track 323° to MIGGY, then on (transition). Maintain ATC assigned altitude, expect filed altitude 10 minutes after departure.

GETCH TRANSITION (MIGGY2.GETCH):  
HUBBY TRANSITION (MIGGY2.HUBBY):  
SILAP TRANSITION (MIGGY2.SILAP):



**TAKEOFF MINIMUMS:**  
 Rwys 4, 17, 22: Standard.  
 Rwy 35: Standard with minimum climb of 500' per NM to 1100.



NOTE: Chart not to scale.