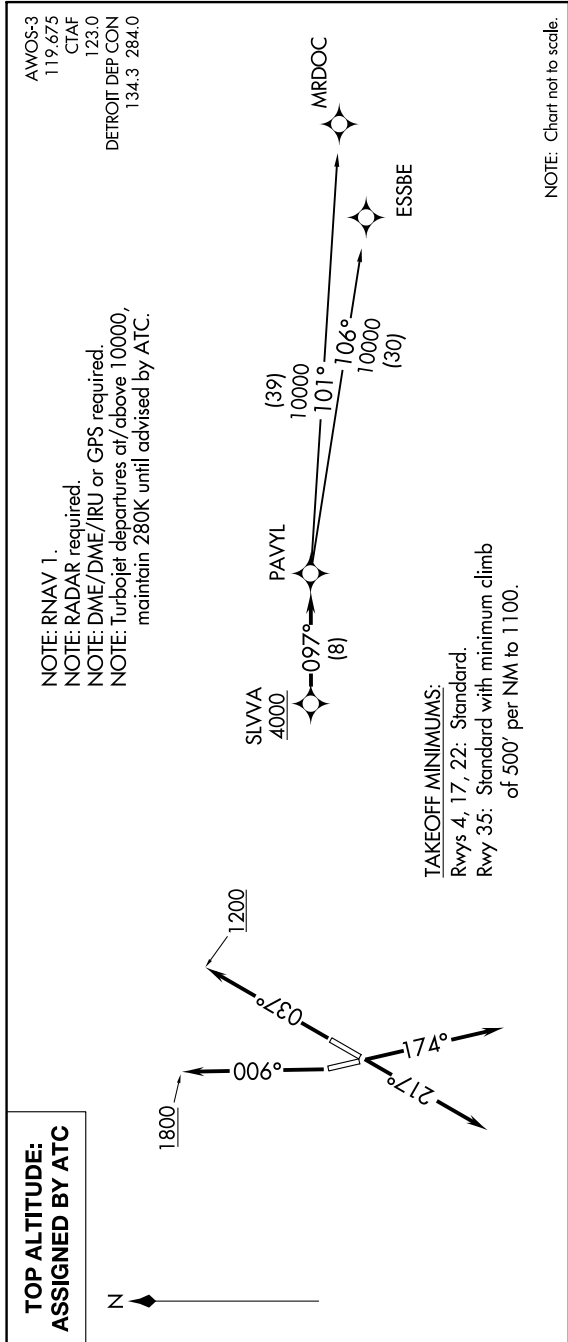


EC-1, 25 JAN 2024 to 22 FEB 2024



DEPARTURE ROUTE DESCRIPTION

- TAKEOFF RUNWAY 4: Climb on heading 037° to 1200 then as assigned for RADAR vectors to cross SLVVA at or above 4000, thence....
- TAKEOFF RUNWAY 17: Climb on heading 174° or as assigned for RADAR vectors to cross SLVVA at or above 4000, thence....
- TAKEOFF RUNWAY 22: Climb on heading 217° or as assigned for RADAR vectors to cross SLVVA at or above 4000, thence....
- TAKEOFF RUNWAY 35: Climb on heading 006° to 1800 then as assigned for RADAR vectors to cross SLVVA at or above 4000, thence....
- ....on track 097° to PAVYL, then on (transition). Maintain ATC assigned altitude, expect filed altitude 10 minutes after departure.
- ESSBE TRANSITION (PAVYL2.ESSBE):
- MRDOC TRANSITION (PAVYL2.MRDOC):

EC-1, 25 JAN 2024 to 22 FEB 2024