

(ZETTR3.ZETTR) 19339

ZETTR THREE DEPARTURE (RNAV)

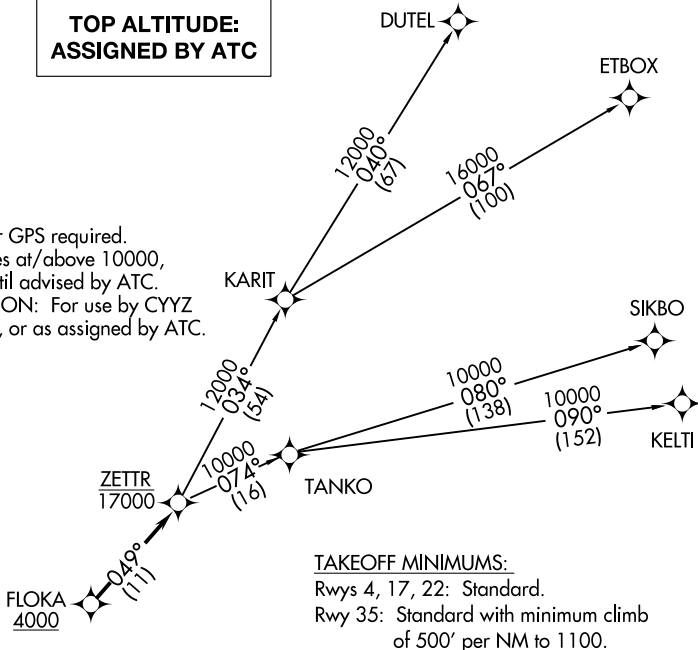
AL-940 (FAA)

GROSSE ILE MUNI (0N2)
DETROIT/GROSSE ILE, MICHIGAN

AWOS-3
119.675
CTAF
123.0
DETROIT DEP CON
134.3 284.0

**TOP ALTITUDE:
ASSIGNED BY ATC**

- NOTE: RNAV 1.
- NOTE: RADAR required.
- NOTE: DME/DME/IRU or GPS required.
- NOTE: Turbojet departures at/above 10000, maintain 280K until advised by ATC.
- NOTE: TANKO TRANSITION: For use by CYYZ area arrivals only, or as assigned by ATC.



TAKEOFF MINIMUMS:

Rwys 4, 17, 22: Standard.
Rwy 35: Standard with minimum climb of 500' per NM to 1100.

DEPARTURE ROUTE DESCRIPTION

TAKEOFF RUNWAY 4: Climb on heading 037° to 1200 then as assigned for RADAR vectors to cross FLOKA at or above 4000, thence....

TAKEOFF RUNWAY 17: Climb on heading 174° or as assigned for RADAR vectors to cross FLOKA at or above 4000, thence....

TAKEOFF RUNWAY 22: Climb on heading 217° or as assigned for RADAR vectors to cross FLOKA at or above 4000, thence....

TAKEOFF RUNWAY 35: Climb on heading 006° to 1800 then as assigned for RADAR vectors to cross FLOKA at or above 4000, thence....

....on track 049° to cross ZETTR at or below 17000, then on (transition). Maintain ATC assigned altitude, expect filed altitude 10 minutes after departure.

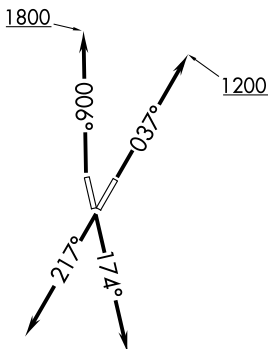
DUTEL TRANSITION (ZETTR3.DUTEL):

ETBOX TRANSITION (ZETTR3.ETBOX):

KELTI TRANSITION (ZETTR3.KELTI):

SIKBO TRANSITION (ZETTR3.SIKBO):

TANKO TRANSITION (ZETTR3.TANKO):



NOTE: Chart not to scale.

ZETTR THREE DEPARTURE (RNAV)
(ZETTR3.ZETTR) 05DEC19

DETROIT/GROSSE ILE, MICHIGAN
GROSSE ILE MUNI (0N2)

EC-1, 25 JAN 2024 to 22 FEB 2024

EC-1, 25 JAN 2024 to 22 FEB 2024